

## Basic Information

Product Name	Anti-TLR4 Antibody
Gene Name	TLR4
Source	Rabbit
Isotype	IgG
Species Reactivity	mouse
Tested Application	WB, ELISA
Contents	500 ug/ml antibody with PBS, 0.02% NaN <sub>3</sub> , 1 mg BSA and 50% glycerol.
Immunogen	E.coli-derived mouse Tlr4 recombinant protein (Position: N26-E827).
concentration	500 ug/ml
Purification	Immunogen affinity purified.
Observed MW	96KD
Dilution Ratios	Western blot (WB):1:500-2000 ELISA: 1:100-1000

## Storage

12 months from date of receipt, -20°C as supplied. 6 months 2 to 8°C after reconstitution. Avoid repeated freezing and thawing.

## Background Information

Toll-like receptor 4 is a protein that in humans is encoded by the TLR4 gene. This gene belongs to the evolutionarily-conserved Toll-like receptor family, whose members are type-1 transmembrane proteins that are involved in innate immunity. Toll-like receptors are characterized by an extracellular leucine-rich repeat domain that functions in ligand recognition and an intracellular toll/interleukin-1 receptor-like domain that is crucial for signal transduction. The receptor encoded by this gene mediates the innate immune response to bacterial lipopolysaccharide, a major component of the outer membrane of Gram-negative bacteria, through synthesis of pro-inflammatory cytokines and chemokines. In addition, this protein can recognize other pathogens from Gram-negative and Gram-positive bacteria as well as viral components. Mice deficient in this gene display a number of immune response-related phenotypes including hyporesponsiveness to bacterial lipopolysaccharide and increased levels of respiratory syncytial virus compared to controls.

## Reference

Anti-TLR4 Antibody被引用在1文献中。

## Selected Validation Data

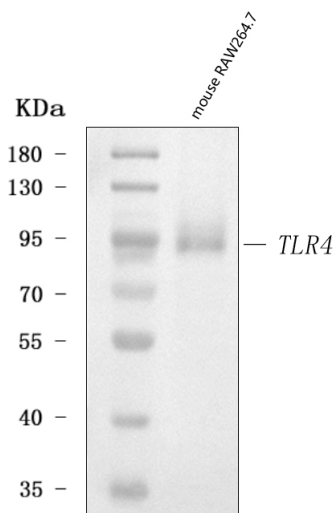


Figure 1. Western blot analysis of anti- TLR4 antibody (A00017-3).

The sample well of each lane was loaded with 50ug of sample under reducing conditions.

Lane 1: mouse RAW264.7 whole cell lysates.

Use rabbit anti- TLR4 1:1000, probed with a goat anti-rabbit IgG-HRP secondary antibody. The signal is developed using an Enhanced Chemiluminescent detection (ECL) kit (Catalog # EK1002). A specific band was detected for TLR4 at approximately 96KD. The expected band size for TLR4 is at 96KD.