

Basic Information

Product Name	Anti-BCL2 Antibody	
Gene Name	BCL2	
Source	Rabbit	
Isotype	IgG	
Species Reactivity	human	
Tested Application	WB, ICC/IF, FCM, ELISA	
Contents	500 ug/ml antibody with PBS , 0.02% NaN ₃ , 1 mg BSA and 50% glycerol.	
Immunogen	E. coli-derived human Bcl-2 recombinant protein (Position: Q118-E165).	
concentration	500 ug/ml	
Purification	Immunogen affinity purified.	
Observed MW	26KD	
Dilution Ratios	Western blot (WB): 1:500-2000 Immunocytochemistry/Immunofluorescence (ICC/IF): 1:50-400 Flow cytometry (FCM): 1-3 µg/1x10 ⁶ cells ELISA: 1:100-1000	

Storage

12 months from date of receipt, -20°C as supplied. 6 months 2 to 8°C after reconstitution. Avoid repeated freezing and thawing.

Background Information

Immunoreactive BCL2 protein in the neoplastic cells of almost all follicular lymphomas whereas no BCL2 protein was detected in follicles affected by nonneoplastic processes or in normal lymphoid tissue. Every tumor with molecular-genetic evidence of t(14;18) translocation expressed detectable levels of BCL2 protein, regardless of whether the breakpoint was located in or at a distance from the BCL2 gene. Overexpression of BCL2 blocks the apoptotic death of a pro-B-lymphocyte cell line.

Reference

Anti-BCL2 Antibody被引用在9文献中。

Selected Validation Data

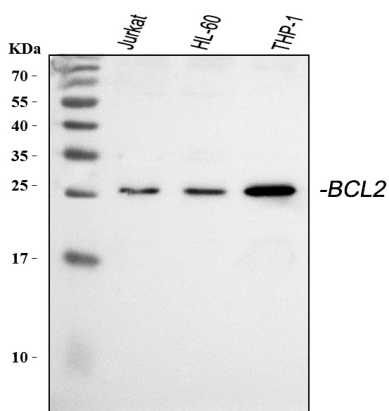


Figure 1. Western blot analysis of anti- BCL2 antibody (A00040-2). The sample well of each lane was loaded with 50ug of sample under reducing conditions.
Lane 1: human Jurkat whole cell lysates,
Lane 2: human HL-60 whole cell lysates,
Lane 3: human THP-1 whole cell lysates.
Use rabbit anti- BCL2 1:1000, probed with a goat anti-rabbit IgG- HRP secondary antibody. The signal is developed using an Enhanced Chemiluminescent detection (ECL) kit (Catalog # EK1002). A specific band was detected for BCL2 at approximately 26KD. The expected band size for BCL2 is at 26KD.

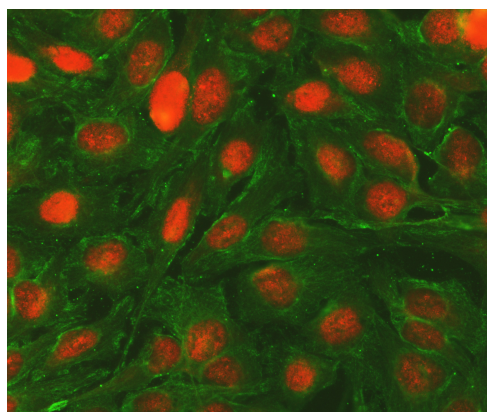


Figure 2. ICC analysis using anti- BCL2 antibody (A00040-2) and anti-Tubulin alpha antibody (M03989-3). were detected in immersion fixed U2OS cell line. Cells were stained using the cy3-conjugated Anti-rabbit IgG Secondary Antibody (red)(Catalog#BA1032) and Dylight488-conjugated Anti- mouse IgG Secondary Antibody (green)(Catalog # BA1126).

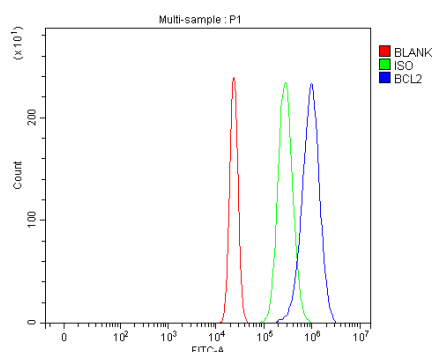


Figure 3. Flow cytometry analysis of U2OS cell (1×10^6) DyLight 488 conjugated goat anti- rabbit IgG(blue) was used as secondary antibody.Isotype control antibody (Green line) was rabbit IgG DyLight 488. Unlabelled sample (Red line).