

Basic Information

Product Name	Anti-IL6 Antibody
Gene Name	IL6
Source	Rabbit
Isotype	IgG
Species Reactivity	mouse, rat
Tested Application	WB, ELISA(Cap)
Contents	500 ug/ml antibody with PBS , 0.02% Na ₃ N , 1 mg BSA and 50% glycerol.
Immunogen	A synthetic peptide corresponding to a sequence of rat IL6 (KTIQLILKALEEFLKVTMRSTRQT).
concentration	500 ug/ml
Purification	Immunogen affinity purified.
Observed MW	30KD
Dilution Ratios	Western blot(WB):1:500-2000 ELISA(Cap): 1:50-1:200

Storage

12 months from date of receipt, -20°C as supplied. 6 months 2 to 8°C after reconstitution. Avoid repeated freezing and thawing.

Background Information

Interleukin-6 (IL-6) is a protein that in humans is encoded by the IL6 gene. IL-6 is an interleukin that acts as both a pro-inflammatory and anti-inflammatory cytokine. It is secreted by T cells and macrophages to stimulate immune response to trauma, especially burns or other tissue damage leading to inflammation. IL-6 is one of the most important mediators of fever and of the acute phase response. IL-6 is also essential for hybridoma growth and is found in many supplemental cloning media such as briclone. By in situ hybridization and Southern blot analysis of mouse-human hybrid cell lines, the IL6 gene is mapped to chromosome 7p15.

Reference

Anti-IL6 Antibody被引用在1文献中。

Selected Validation Data

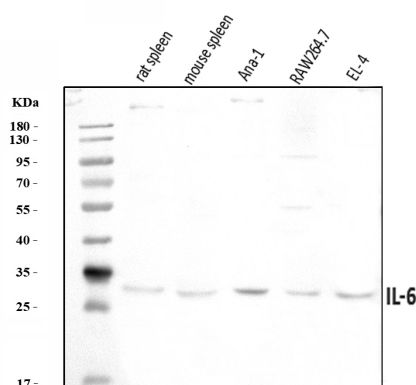


Figure 1. Western blot analysis of anti- IL-6 Antibody (A00102-2).

The sample well of each lane was loaded with 50ug of sample under reducing conditions.

Lane 1: rat spleen tissue lysates,

Lane 2: mouse spleen tissue lysates,

Lane 3: Ana-1 whole cell lysates,

Lane 4: RAW264.7 whole cell lysates,

Lane 5: EL-4 whole cell lysates.

Use rabbit anti- IL-6 1:1000, probed with a goat anti-rabbit IgG-HRP secondary antibody. The signal is developed using an Enhanced Chemiluminescent detection (ECL) kit (Catalog # EK1002). A specific band was detected for IL-6 at approximately 30KD. The expected band size for IL-6 is at 24KD.