

## Basic Information

Product Name	Anti-FGF2 Antibody
Gene Name	FGF2
Source	Rabbit
Isotype	IgG
Species Reactivity	human, mouse, rat
Tested Application	WB, ELISA(Cap)
Contents	500 ug/ml antibody with PBS , 0.02% NaN3 , 1 mg BSA and 50% glycerol.
Immunogen	E. coli-derived human FGF2 recombinant protein (Position: P143-S288).
concentration	500 ug/ml
Purification	Immunogen affinity purified.
Observed MW	18KD
Dilution Ratios	Western blot(WB):1:500-2000 ELISA(Cap): 1:50-1:200

## Storage

12 months from date of receipt, -20°C as supplied. 6 months 2 to 8°C after reconstitution. Avoid repeated freezing and thawing.

## Background Information

FGF2 has been implicated in a multitude of physiologic and pathologic processes, including limb development, angiogenesis, wound healing, and tumor growth. Human FGF2 shares 96% and 97% amino acid sequence homology with mouse and rat respectively. FGF2 belongs to the fibroblast growth factor (FGF) family. Fibroblast growth factors (FGFs) exhibit widespread mitogenic and neurotrophic activities. Nine members of the family are currently known, and FGF-1 and FGF-2 are present in relatively high levels in CNS. FGF-2 is expressed by at low levels in many tissues and cell types and reaches high concentrations in brain and pituitary.

## Selected Validation Data

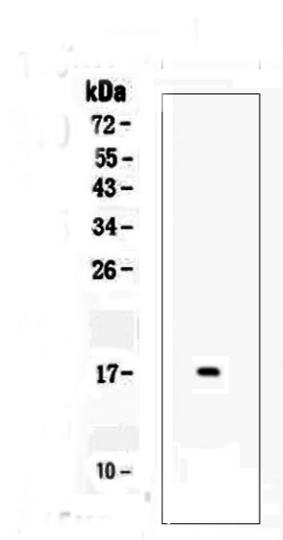


Figure 1. Western blot analysis of FGF2 using anti-FGF2 antibody (A00121-1). Lane 1: recombinant human FGF2 protein 1ng. probed with a goat anti-rabbit IgG-HRP secondary antibody . The signal is developed using an Enhanced Chemiluminescent detection (ECL) kit (Catalog # EK1002).