

## Basic Information

<b>Product Name</b>	Anti-ICAM1 Antibody	
<b>Gene Name</b>	Icam1	
<b>Source</b>	Rabbit	
<b>Isotype</b>	IgG	
<b>Species Reactivity</b>	mouse	
<b>Tested Application</b>	WB, IHC, ELISA	
<b>Contents</b>	500 ug/ml antibody with PBS , 0.02% NaN3 , 1 mg BSA and 50% glycerol.	
<b>Immunogen</b>	E.coli-derived mouse Icam1 recombinant protein (Position: K53-P537).	
<b>concentration</b>	500 ug/ml	
<b>Purification</b>	Immunogen affinity purified.	
<b>Observed MW</b>	90-110KD	
<b>Dilution Ratios</b>	Western blot(WB):	1:500-2000
	Immunohistochemistry in paraffin section (IHC):	1:50-400
	ELISA:	1:100-1000

## Storage

12 months from date of receipt, -20°C as supplied. 6 months 2 to 8°C after reconstitution. Avoid repeated freezing and thawing.

## Background Information

CD54, also known as ICAM-1. Intercellular adhesion molecule-1 (ICAM1) is a ligand for lymphocyte function-associated (LFA) antigens. ICAM-1 is an integral membrane protein, a member of the immunoglobulin superfamily, and a ligand for LFA-1, a beta 2 leukocyte integrin. This protein is the major human rhinovirus receptor. The ICAM1 gene is mapped to human chromosome 19. In humans, lymphocyte adhesion to cells is mediated by the protein heterodimer CD11a/CD18 (Leu-CAMa, LFA-1) and its ligand CD54 (ICAM-1).

## Selected Validation Data

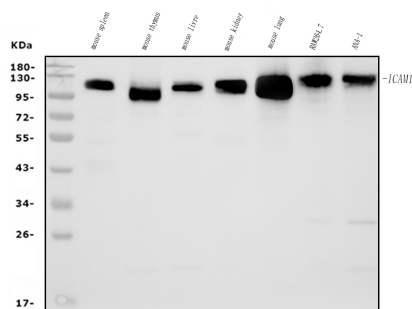


Figure 1. Western blot analysis of anti- Icam1 antibody (A00171-1). The sample well of each lane was loaded with 50ug of sample under reducing conditions. Lane 1: Mouse spleen tissue lysates, Lane 2: mouse thymus tissue lysates, Lane 3: Mouse liver tissue lysates, Lane 4: Mouse kidney tissue lysates, Lane 5: Mouse lung tissue lysates, Lane 6: Mouse RAW264.7 whole cell lysates, Lane 7: Mouse ANA-1 whole cell lysates. Use rabbit anti- Icam1 1:1000, probed with a goat anti-rabbit IgG-HRP secondary antibody. The signal is developed using an Enhanced Chemiluminescent detection (ECL) kit (Catalog # EK1002). A specific band was detected for Icam1 at approximately 90-110KD. The expected band size for Icam1 is at 58KD.

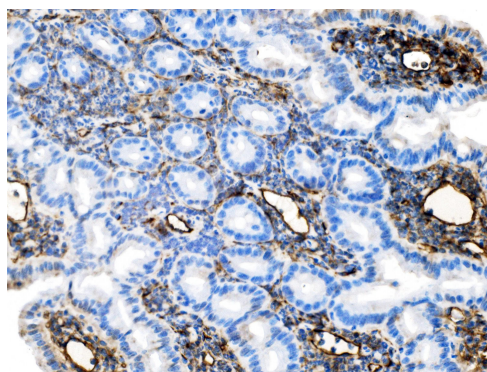


Figure 2. IHC analysis using anti- Icam1 antibody (A00171-1). detected in paraffin-embedded section of mouse intestine tissue. Biotinylated goat anti-rabbit IgG was used as secondary antibody. The tissue section was developed using Streptavidin-Biotin-Complex (SABC) (Catalog # SA1022) with DAB as the chromogen.