

## Basic Information

Product Name	Anti-ICAM1 Antibody	
Gene Name	ICAM1	
Source	Rabbit	
Isotype	IgG	
Species Reactivity	human, mouse, rat	
Tested Application	WB, IHC, ICC/IF, FCM	
Contents	500 ug/ml antibody with PBS , 0.02% NaN <sub>3</sub> , 1 mg BSA and 50% glycerol.	
Immunogen	E. coli-derived human ICAM1 recombinant protein (Position: Q28-R268).	
concentration	500 ug/ml	
Purification	Immunogen affinity purified.	
Observed MW	90-110KD	
Dilution Ratios	Western blot(WB): 1:500-2000 Immunohistochemistry in paraffin section (IHC): 1:50-400 Immunocytochemistry/Immunofluorescence (ICC/IF): 1:50-400 Flow cytometry (FCM): 1-3 µg/1x10 <sup>6</sup> cells (Boiling the paraffin sections in 10mM citrate buffer,pH6.0,or PH8.0 EDTA repair liquid for 20 mins is required for the staining of formalin/paraffin sections.) Optimal working dilutions must be determined by end user.	

## Storage

12 months from date of receipt, -20°C as supplied. 6 months 2 to 8°C after reconstitution. Avoid repeated freezing and thawing.

## Background Information

CD54, also known as ICAM-1. Intercellular adhesion molecule-1 (ICAM1) is a ligand for lymphocyte function-associated (LFA) antigens. ICAM-1 is an integral membrane protein, a member of the immunoglobulin superfamily, and a ligand for LFA-1, a beta 2 leukocyte integrin. This protein is the major human rhinovirus receptor. The ICAM1 gene is mapped to human chromosome 19. In humans, lymphocyte adhesion to cells is mediated by the protein heterodimer CD11a/CD18 (Leu-CAMa, LFA-1) and its ligand CD54 (ICAM-1).

## Reference

Anti-ICAM1 Antibody被引用在7文献中。

## Selected Validation Data

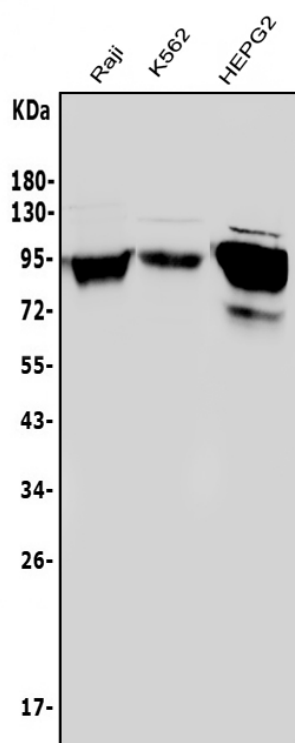


Figure 1. Western blot analysis of anti- ICAM1 antibody (A00171).The sample well of each lane was loaded with 50ug of sample under reducing conditions.Lane 1: human Raji whole cell lysates,Lane 2: human K562 whole cell lysates,Lane 3: human HepG2 whole cell lysates,Use rabbit anti- ICAM1 1:1000, probed with a goat anti-rabbit IgG-HRP secondary antibody. The signal is developed using an Enhanced Chemiluminescent detection (ECL) kit (Catalog # EK1002).A specific band was detected for ICAM1 at approximately 90-110KD. The expected band size for ICAM1 is at 58KD.

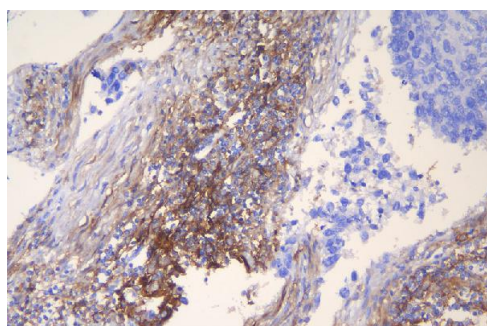


Figure 3. IHC analysis of ICAM1 using anti-ICAM1 antibody (A00171).ICAM1 was detected in paraffin-embedded section of human lung cancer tissue. Heat mediated antigen retrieval was performed in EDTA buffer (pH8.0, epitope retrieval solution). The tissue section was blocked with 10% goat serum. The tissue section was then incubated with 1μg/ml rabbit anti-ICAM1 Antibody (A00171) overnight at 4°C. Biotinylated goat anti-rabbit IgG was used as secondary antibody and incubated for 30 minutes at 37°C. The tissue section was developed using Streptavidin-Biotin-Complex (SABC) (Catalog # SA1022) with DAB as the chromogen.

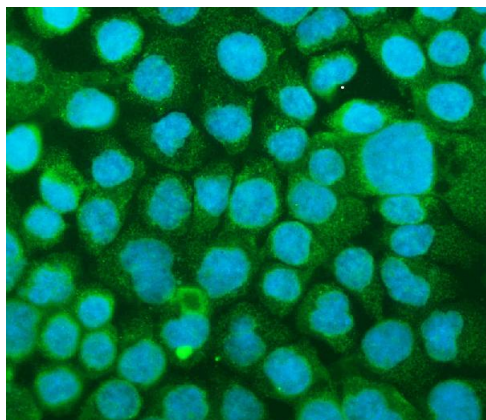


Figure 5. ICC/IF analysis of ICAM1 using anti-ICAM1 antibody (A00171). ICAM1 was detected in immunocytochemical section of A431 cells. Enzyme antigen retrieval was performed using IHC enzyme antigen retrieval reagent (AR0022) for 15 mins. The cells were blocked with 10% goat serum. And then incubated with 2µg/mL rabbit anti-ICAM1 Antibody (A00171) overnight at 4°C. DyLight<sup>®</sup>488 Conjugated Goat Anti-Rabbit IgG (BA1127) was used as secondary antibody at 1:100 dilution and incubated for 30 minutes at 37°C. The section was counterstained with DAPI. Visualize using a fluorescence microscope and filter sets appropriate for the label used.

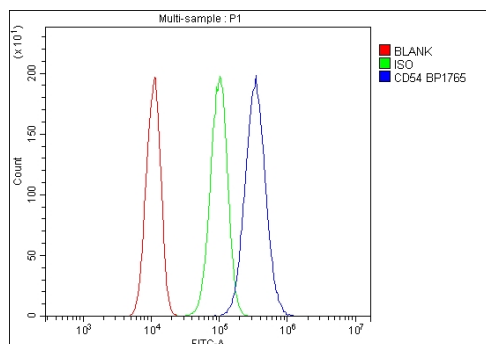


Figure 6. Flow Cytometry analysis of PC-3 cells using anti-ICAM1 antibody (A00171). Overlay histogram showing PC-3 cells stained with A00171 (Blue line). The cells were blocked with 10% normal goat serum. And then incubated with rabbit anti-ICAM1 Antibody (A00171, 1µg/1x10<sup>6</sup> cells) for 30 min at 20°C. DyLight<sup>®</sup>488 conjugated goat anti-rabbit IgG (BA1127, 5-10µg/1x10<sup>6</sup> cells) was used as secondary antibody for 30 minutes at 20°C. Isotype control antibody (Green line) was rabbit IgG (1µg/1x10<sup>6</sup>) used under the same conditions. Unlabelled sample (Red line) was also used as a control.