

## Basic Information

Product Name	Anti-IL4 Antibody
Gene Name	IL4
Source	Rabbit
Isotype	IgG
Species Reactivity	human
Tested Application	WB, ELISA
Contents	500 ug/ml antibody with PBS , 0.02% NaN <sub>3</sub> , 1 mg BSA and 50% glycerol.
Immunogen	A synthetic peptide corresponding to a sequence at the C-terminus of mouse IL-4(123-140aa SLKDFLESLKSIMQMDYS).
concentration	500 ug/ml
Purification	Immunogen affinity purified.
Observed MW	60KD
Dilution Ratios	Western blot(WB):1:500-2000 (ELISA): 1:100-1000

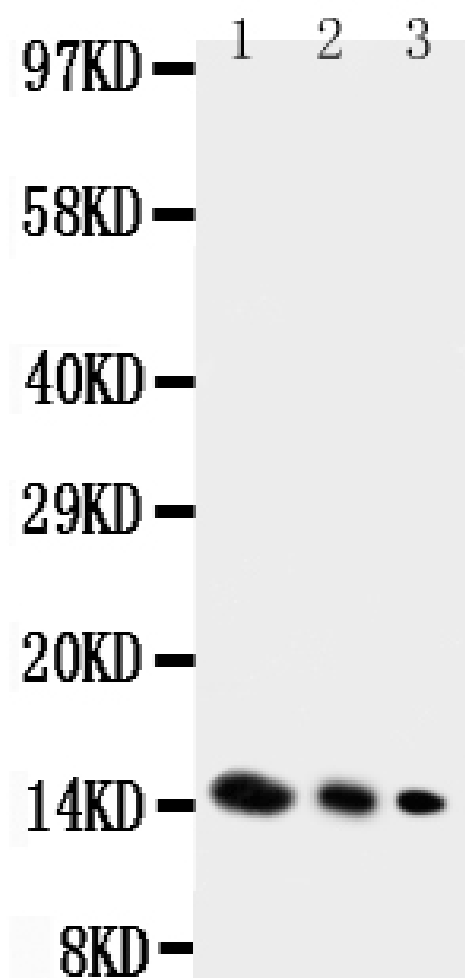
## Storage

12 months from date of receipt, -20°C as supplied. 6 months 2 to 8°C after reconstitution. Avoid repeated freezing and thawing.

## Background Information

Interleukin-4(IL-4), also known as a B-cell stimulatory factor1(BSF1), is an immunomodulatory cytokine, which can inhibit the growth of tumour cells. The human cDNA contains a single open reading frame encoding a protein of 153 amino acids, including a putative signal peptide. IL-4 may act as an autocrine growth factor in pancreatic cancer cells and also give rise to the possibility that cancer-derived IL-4 may suppress cancer-directed immunosurveillance in vivo, in addition to its growth-promoting effects, thereby facilitating pancreatic tumor growth and metastasis. The mouse and human genes and their protein products show structural and functional similarities. The human IL-4 gene, which occurs as a single copy in the haploid genome, is mapped on chromosome 5.2 The standard product used in this kit is recombinant human IL-4, consisting of 130 amino acids with the molecular mass of 14KDa.

## Selected Validation Data



Lane 1: Recombinant Mouse IL-4 Protein 10ng  
Lane 2: Recombinant Mouse IL-4 Protein 5ng  
Lane 3: Recombinant Mouse IL-4 Protein 2.5ng