

## Basic Information

Product Name	Anti-MMP2 Antibody	
Gene Name	MMP2	
Source	Rabbit	
Isotype	IgG	
Species Reactivity	human, rat	
Tested Application	WB, IHC, FCM, ELISA	
Contents	500 ug/ml antibody with PBS , 0.02% NaN <sub>3</sub> , 1 mg BSA and 50% glycerol.	
Immunogen	E.coli-derived human MMP2 recombinant protein (Position: L411-C660).	
concentration	500 ug/ml	
Purification	Immunogen affinity purified.	
Observed MW	72KD	
Dilution Ratios	Western blot(WB):	1:500-2000
	Immunohistochemistry in paraffin section IHC1:	50-400
	Flow cytometry (FCM):	1-3 $\mu$ g/1x10 <sup>6</sup> cells
	ELISA:	1:100-1000

## Storage

12 months from date of receipt, -20°C as supplied. 6 months 2 to 8°C after reconstitution. Avoid repeated freezing and thawing.

## Background Information

Matrix metalloproteinase-2 (MMP2) is a Type IV collagenase, 72-kD, which is also known as gelatinase and is a member of a group of secreted zinc metalloproteases. The MMP2 gene is 17 kb long with 13 exons varying in size from 110 to 901 bp and 12 introns ranging from 175 to 4,350 bp, located within a region of human chromosome 16q13. In addition, the extra exons encode the amino acids of the fibronectin-like domain which has so far been found in only the 72- and 92-kDa type IV collagenase. MMP2, which has a critical role in the binding of progelatinase A and TIMP4 via the C-terminal hemopexin-like domain (C domain), is functionally associated on the surface of angiogenic blood vessels. Not only is a likely effector of endometrial menstrual breakdown, MMP2 is also effector and regulator of the inflammatory response. Moreover, MMP2 could be helpful in diagnosing Takayasu arteritis.

## Reference

Anti-MMP2 Antibody被引用在2文献中。

## Selected Validation Data

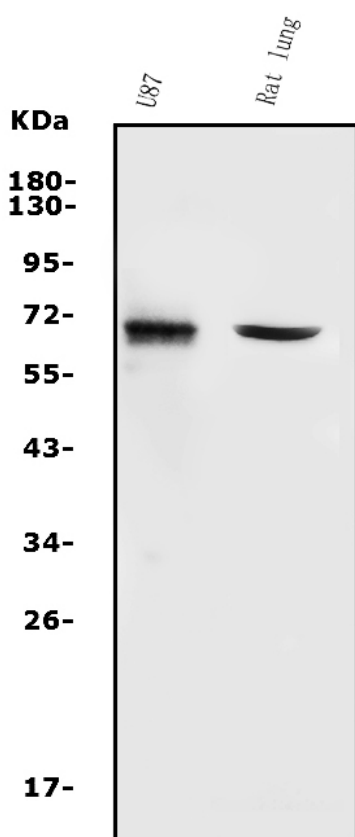


Figure 1. Western blot analysis of anti- MMP2 antibody (A00286-2). The sample well of each lane was loaded with 50ug of sample under reducing conditions. Lane 1: human U87 whole cell lysates, Lane 2: Rat lung tissue lysates. Use rabbit anti- MMP2 1:1000, probed with a goat anti-rabbit IgG-HRP secondary antibody. The signal is developed using an Enhanced Chemiluminescent detection (ECL) kit (Catalog # EK1002). A specific band was detected for MMP2 at approximately 72KD. The expected band size for MMP2 is at 74KD.

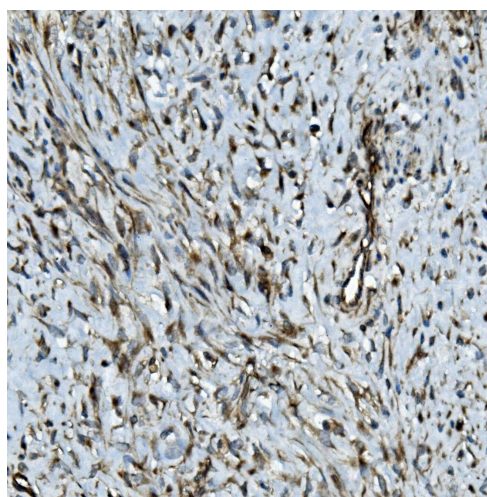


Figure 2. IHC analysis using anti- MMP2 antibody (A00286-2). detected in paraffin-embedded section of human mammary cancer tissue. Biotinylated goat anti-rabbit IgG was used as secondary antibody. The tissue section was developed using Streptavidin-Biotin-Complex (SABC) (Catalog # SA1022) with DAB as the chromogen.

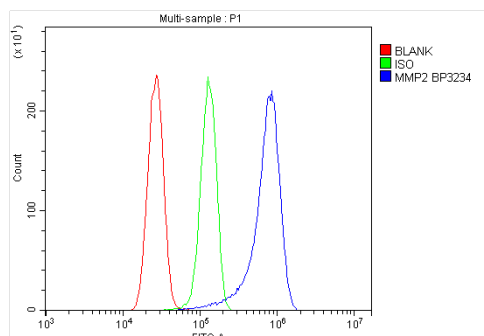


Figure 5. Flow cytometry analysis of U87 cell (1x10<sup>6</sup>) DyLight 488 conjugated goat anti-mouse IgG (blue) was used as secondary antibody. Isotype control antibody (Green line) was mouse IgG DyLight 488. Unlabelled sample (Red line).