

Basic Information

Product Name	Anti-MMP2 Antibody
Gene Name	MMP2
Source	Rabbit
Isotype	IgG
Species Reactivity	human
Tested Application	WB, Direct ELISA
Contents	500 ug/ml antibody with PBS, 0.02% NaN ₃ , 1 mg BSA and 50% glycerol.
Immunogen	E.coli-derived human MMP2 recombinant protein (Position: E412-N573).
concentration	500 ug/ml
Purification	Immunogen affinity purified.
Observed MW	70KD
Dilution Ratios	Western blot (WB):1:500-2000 Direct ELISA: 1:100-1000

Storage

12 months from date of receipt, -20°C as supplied. 6 months 2 to 8°C after reconstitution. Avoid repeated freezing and thawing.

Background Information

Matrix metalloproteinase-2 (MMP2) is a Type IV collagenase, 72-kD, which is also known as gelatinase and is a member of a group of secreted zinc metalloproteases. The MMP2 gene is 17 kb long with 13 exons varying in size from 110 to 901 bp and 12 introns ranging from 175 to 4,350 bp, located within a region of human chromosome 16q13. In addition, the extra exons encode the amino acids of the fibronectin-like domain which has so far been found in only the 72- and 92-kDa type IV collagenase. MMP2, which has a critical role in the binding of progelatinase A and TIMP4 via the C-terminal hemopexin-like domain (C domain), is functionally associated on the surface of angiogenic blood vessels. Not only is a likely effector of endometrial menstrual breakdown, MMP2 is also effector and regulator of the inflammatory response. Moreover, MMP2 could be helpful in diagnosing Takayasu arteritis.

Selected Validation Data

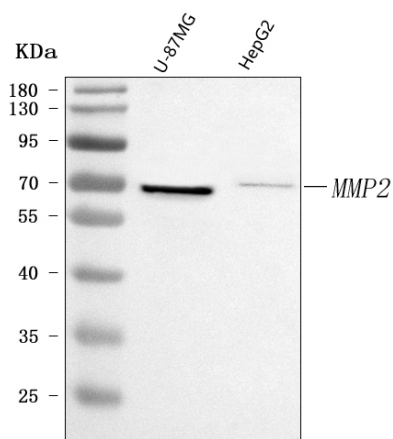


Figure 1. Western blot analysis of anti-MMP2 antibody (A00286-3).

The sample well of each lane was loaded with 30 ug of sample under reducing conditions.

Lane 1: human U-87MG whole cell lysates,

Lane 2: human HepG2 whole cell lysates.

After electrophoresis, proteins were transferred to a membrane.

Then the membrane was incubated with rabbit anti-MMP2 antigen affinity purified polyclonal antibody (A00286-3) and probed with a

goat anti-rabbit IgG-HRP secondary antibody (Catalog # BA1054).

The signal is developed using ECL Plus Western Blotting Substrate

(Catalog # AR1197). A specific band was detected for MMP2 at

approximately 70 kDa. The expected band size for MMP2 is at 74 kDa.