

Basic Information

Product Name	Anti-NGF beta/NGF Antibody
Gene Name	NGF
Source	Rabbit
Isotype	IgG
Species Reactivity	human
Tested Application	WB
Contents	500 ug/ml antibody with PBS , 0.02% NaN ₃ , 1 mg BSA and 50% glycerol.
Immunogen	A synthetic peptide corresponding to a sequence of human NGF(THTFVKALTMDGKQAARFIRID).
concentration	500 ug/ml
Purification	Immunogen affinity purified.
Observed MW	27-35KD
Dilution Ratios	Western blot(WB):1:500-2000

Storage

12 months from date of receipt, -20°C as supplied. 6 months 2 to 8°C after reconstitution. Avoid repeated freezing and thawing.

Background Information

Nerve growth factor (NGF) is a neurotrophic factor and neuropeptide primarily involved in the regulation of growth, maintenance, proliferation, and survival of certain target neurons. It is mapped to 1p13.2. This gene is a member of the NGF-beta family and encodes a secreted protein which homodimerizes and is incorporated into a larger complex. This protein has nerve growth stimulating activity and the complex is involved in the regulation of growth and the differentiation of sympathetic and certain sensory neurons. Mutations in this gene have been associated with hereditary sensory and autonomic neuropathy, type 5 (HSAN5), and dysregulation of this gene's expression is associated with allergic rhinitis.

Selected Validation Data

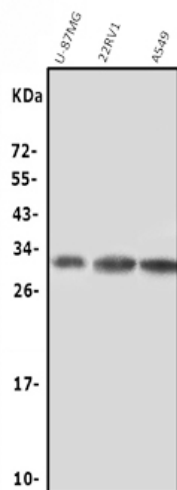


Figure 1. Western blot analysis of anti-NGF antibody (A00341-1).

The sample well of each lane was loaded with 50ug of sample under reducing conditions. Lane 1: human U-87MG whole cell lysates, Lane 2: human 22RV1 whole cell lysates, Lane 3: human A549 whole cell lysates, Use rabbit anti- NGF 1:1000, probed with a goat anti-rabbit IgG-HRP secondary antibody. The signal is developed using an Enhanced Chemiluminescent detection (ECL) kit (Catalog # EK1002). A specific band was detected for NGF at approximately 27-35KD. The expected band size for NGF is at 27KD.