

Basic Information

Product Name	Anti-ATG7 Antibody
Gene Name	ATG7
Source	Rabbit
Isotype	IgG
Species Reactivity	human
Tested Application	WB, FCM, ELISA
Contents	500 ug/ml antibody with PBS , 0.02% NaN3 , 1 mg BSA and 50% glycerol.
Immunogen	E.coli-derived human ATG7 recombinant protein (Position: D7-Q690).
concentration	500 ug/ml
Purification	Immunogen affinity purified.
Observed MW	78KD
Dilution Ratios	Western blot(WB): 1:500-2000 Flow cytometry (FCM):1-3 μ g/1x10 ⁶ cells ELISA: 1:100-1000

Storage

12 months from date of receipt, -20°C as supplied. 6 months 2 to 8°C after reconstitution. Avoid repeated freezing and thawing.

Background Information

Autophagy related 7 is a protein in humans encoded by ATG7 gene. It is mapped to 3p25.3. This gene encodes an E1-like activating enzyme that is essential for autophagy and cytoplasmic to vacuole transport. The encoded protein is also thought to modulate p53-dependent cell cycle pathways during prolonged metabolic stress. It has been associated with multiple functions, including axon membrane trafficking, axonal homeostasis, mitophagy, adipose differentiation, and hematopoietic stem cell maintenance. Alternative splicing results in multiple transcript variants.

Selected Validation Data

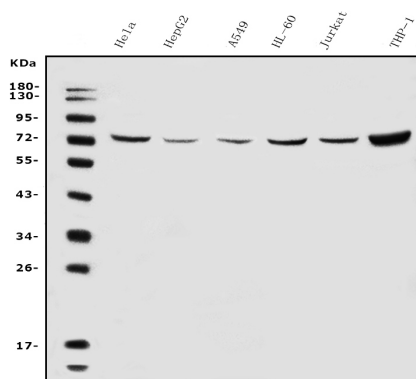


Figure 1. Western blot analysis of anti-ATG7 antibody (A00346-4). The sample well of each lane was loaded with 50ug of sample under reducing conditions. Lane 1: Human HELA whole cell lysates, Lane 2: Human HepG2 whole cell lysates, Lane 3: Human A549 whole cell lysates, Lane 4: Human HL-60 whole cell lysates, Lane 5: Human Jurkat whole cell lysates, Lane 6: Human THP-1 whole cell lysates. Use rabbit anti- ATG7 1:1000, probed with a goat anti-rabbit IgG-HRP secondary antibody. The signal is developed using an Enhanced Chemiluminescent detection (ECL) kit (Catalog # EK1002). A specific band was detected for ATG7 at approximately 78KD. The expected band size for ATG7 is at 78KD.