

Basic Information

Product Name	Anti-ATF4 Antibody
Gene Name	ATF4
Source	Rabbit
Isotype	IgG
Species Reactivity	human
Tested Application	WB
Contents	500 ug/ml antibody with PBS , 0.02% NaN3 , 1 mg BSA and 50% glycerol.
Immunogen	A synthetic peptide corresponding to a sequence at the N-terminus of human ATF4 (71-100aa SNNKEDAFSGTDWMLEKMDLKEFDLDALL), different from the related mouse and rat sequences by five amino acids.
concentration	500 ug/ml
Purification	Immunogen affinity purified.
Observed MW	50KD
Dilution Ratios	Western blot (WB):1:500-2000

Storage

12 months from date of receipt, -20°C as supplied. 6 months 2 to 8°C after reconstitution. Avoid repeated freezing and thawing.

Background Information

ATF4, Activating Transcription Factor 4, is also known as CREB2. ATF4 belongs to the large ATF/CREB family of transcription factors which bind DNA via their basic region and dimerize via their leucine zipper domain to form a variety of homo- and heterodimers to regulate gene transcription. It is identified that members of this family share significant sequence similarity within a leucine zipper DNA-binding motif and an adjacent basic region. The ATF4 gene is mapped to chromosome 22. Unlike CREB, which activates transcription from CRE-containing promoters, CREB2 functions as a specific repressor of CRE-dependent transcription. The transcriptional repressor activity resides within the C-terminal leucine zipper and basic domain region of the CREB2 protein.

Selected Validation Data

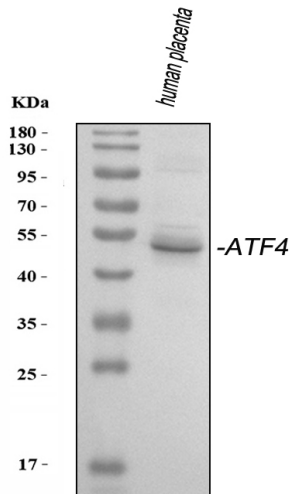


Figure 1. Western blot analysis of anti- ATF4 antibody (A00371).
The sample well of each lane was loaded with 30ug of sample under reducing conditions.

Lane 1: human placenta tissue lysates.

Use rabbit anti- ATF4 1:1000, probed with a goat anti-rabbit IgG-
HRP secondary antibody. The signal is developed using an
Enhanced Chemiluminescent detection (ECL) kit (Catalog#EK1002).
A specific band was detected for ATF4 at approximately 50KD. The
expected band size for ATF4 is at 39KD.