

Basic Information

Product Name	Anti-IL2 Antibody
Gene Name	IL2
Source	Rabbit
Isotype	IgG
Species Reactivity	human
Tested Application	WB, ELISA
Contents	500 ug/ml antibody with PBS , 0.02% NaN3 , 1 mg BSA and 50% glycerol.
Immunogen	E. coli-derived human IL-2 recombinant protein (Position: A21-T153). Human IL-2 shares 57.5% and 66.4% amino acid (aa) sequence identity with mouse and rat IL-2, respectively.
concentration	500 ug/ml
Purification	Immunogen affinity purified.
Observed MW	18KD
Dilution Ratios	Western blot(WB):1:500-2000 ELISA: 1:100-1000

Storage

12 months from date of receipt, -20°C as supplied. 6 months 2 to 8°C after reconstitution. Avoid repeated freezing and thawing.

Background Information

IL-2, Interleukin-2, formerly referred to as T-cell growth factor, is a powerfully immunoregulatory lymphokine that is produced by lectin-or antigen-activated T cells. In situ hybridization, the IL-2 gene is assigned to 4q26-q28. IL2 can act as a growth hormone for both B and T lymphocytes. It is useful in the study of the molecular nature of T-cell differentiation and, like interferons, augments natural killer cell activity.

Selected Validation Data

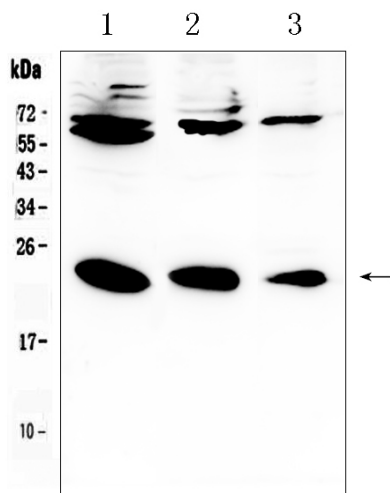


Figure 1. Western blot analysis of IL-2 using anti-IL-2 antibody (A00387-1). The sample well of each lane was loaded with 50ug of sample under reducing conditions. Lane 1: HELa whole Cell lysates, Lane 2: K562 whole Cell lysates, Lane 3: RAJI whole cell lysates. probed with a goat anti-rabbit IgG-HRP secondary antibody . The signal is developed using an Enhanced Chemiluminescent detection (ECL) kit (Catalog # EK1002) A specific band was detected for IL-2 at approximately 22KD. The expected band size for IL-2 is at 18KD.