

## Basic Information

<b>Product Name</b>	Anti-MIP-1 Alpha/CCL3 Antibody		
<b>Gene Name</b>	CCL3		
<b>Source</b>	Rabbit		
<b>Isotype</b>	IgG		
<b>Species Reactivity</b>	mouse, rat		
<b>Tested Application</b>	IHC, ELISA		
<b>Contents</b>	500 ug/ml antibody with PBS, 0.02% NaN <sub>3</sub> , 1 mg BSA and 50% glycerol.		
<b>Immunogen</b>	E.coli-derived mouse Ccl3 recombinant protein (Position: A24-A92).		
<b>concentration</b>	500 ug/ml		
<b>Purification</b>	Immunogen affinity purified.		
<b>Dilution Ratios</b>	(ELISA): 1:100-1000 Immunohistochemistry in paraffin section (IHC): 1:50-400 (Boiling the paraffin sections in 10mM citrate buffer, pH6.0, or PH8.0 EDTA repair liquid for 20 mins is required for the staining of formalin/paraffin sections.) Optimal working dilutions must be determined by end user.		

## Storage

12 months from date of receipt, -20°C as supplied. 6 months 2 to 8°C after reconstitution. Avoid repeated freezing and thawing.

## Background Information

Macrophage inflammatory protein-1 alpha (MIP-1 alpha), also called CCL3, LD78. The cDNA for CCL3 predicts a mature peptide of 69 amino acids with a molecular mass of 7,889 daltons. CCL3 is a member of a newly identified superfamily of small inducible proteins involved in inflammatory responses, wound healing and tumorigenesis. CCL3 is a chemokine that has pro-inflammatory and stem cell inhibitory activities in vitro. It constitutes an important second signal for mast cell degranulation in the conjunctiva in vivo and consequently for acute-phase disease.

## Selected Validation Data

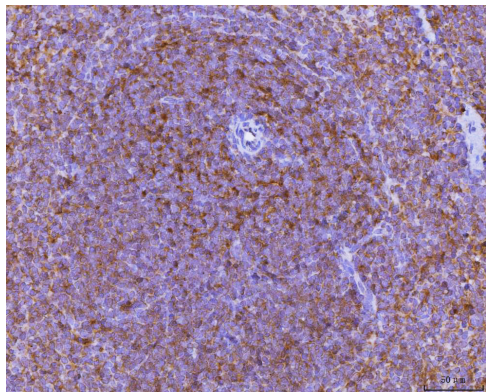


Figure 1. IHC analysis using anti- CCL3 antibody (A00405-3). detected in paraffin-embedded section of mouse spleen tissue. Biotinylated goat anti-rabbit IgG was used as secondary antibody. The tissue section was developed using Streptavidin-Biotin-Complex (SABC) (Catalog # SA1022) with DAB as the chromogen.