

Basic Information

Product Name	Anti-DRP1/DNM1L Antibody
Gene Name	DNM1L
Source	Rabbit
Isotype	IgG
Species Reactivity	human
Tested Application	WB, ELISA
Contents	500 ug/ml antibody with PBS, 0.02% NaN ₃ , 1 mg BSA and 50% glycerol.
Immunogen	E.coli-derived human DRP1/DNM1L recombinant protein (Position: Q452-W736).
concentration	500 ug/ml
Purification	Immunogen affinity purified.
Observed MW	78-82KD
Dilution Ratios	Western blot(WB):1:500-2000 (ELISA): 1:100-1000

Storage

12 months from date of receipt, -20°C as supplied. 6 months 2 to 8°C after reconstitution. Avoid repeated freezing and thawing.

Background Information

Dynamin-1-like protein is a GTPase that regulates mitochondrial fission. In humans, dynamin-1-like protein, which is typically referred to as dynamin-related protein 1 (Drp1), is encoded by the DNM1L gene. The encoded protein mediates mitochondrial and peroxisomal division, and is involved in developmentally regulated apoptosis and programmed necrosis. Dysfunction of this gene is implicated in several neurological disorders, including Alzheimer's disease. Mutations in this gene are associated with the autosomal dominant disorder, encephalopathy, lethal, due to defective mitochondrial and peroxisomal fission (EMPF). Alternative splicing results in multiple transcript variants encoding different isoforms.

Selected Validation Data

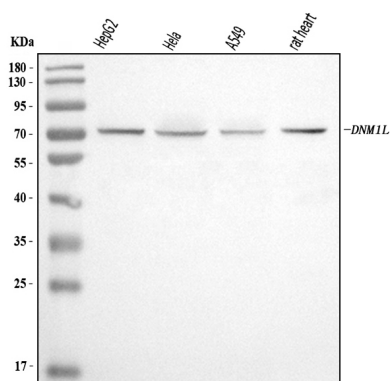


Figure 1. Western blot analysis of anti- DRP1/DNM1L antibody (A00556-3). The sample well of each lane was loaded with 50ug of sample under reducing conditions.

Lane 1: HepG2 whole cell lysates,

Lane 2: Hela whole cell lysates,

Lane 3: A549 whole cell lysates,

Lane 4: rat heart tissue lysates.

Use rabbit anti- DRP1/DNM1L 1:1000, probed with a goat anti-rabbit IgG-HRP secondary antibody. The signal is developed using an Enhanced Chemiluminescent detection (ECL) kit (Catalog # EK1002). A specific band was detected for DRP1/DNM1L at approximately 75KD. The expected band size for DRP1/DNM1L is at 82KD.