

## Basic Information

Product Name	Anti-ADAM10 Antibody
Gene Name	ADAM10
Source	Rabbit
Isotype	IgG
Species Reactivity	human
Tested Application	WB, FCM, ELISA
Contents	500 ug/ml antibody with PBS, 0.02% NaN <sub>3</sub> , 1 mg BSA and 50% glycerol.
Immunogen	E.coli-derived human ADAM10 recombinant protein (Position: A217-D311).
concentration	500 ug/ml
Purification	Immunogen affinity purified.
Observed MW	84KD
Dilution Ratios	Western blot(WB): 1:500-2000 Flow cytometry (FCM): 1-3µg/1x10 <sup>6</sup> cells (ELISA): 1:100-1000

## Storage

12 months from date of receipt, -20°C as supplied. 6 months 2 to 8°C after reconstitution. Avoid repeated freezing and thawing.

## Background Information

A Disintegrin and metalloproteinase domain-containing protein 10, also known as ADAM10 or CDw156 or CD156c is a protein that in humans is encoded by the ADAM10 gene. Members of the ADAM family are cell surface proteins with a unique structure possessing both potential adhesion and protease domains. This gene encodes an ADAM family member that cleaves many proteins including TNF-alpha and E-cadherin. Alternate splicing results in multiple transcript variants encoding different proteins that may undergo similar processing.

## Selected Validation Data

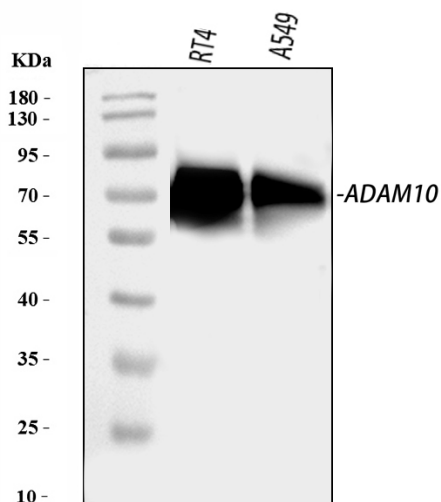


Figure 1. Western blot analysis of anti- ADAM10 Antibody (A00566-5). The sample well of each lane was loaded with 50ug of sample under reducing conditions.

Lane 1: RT4 whole cell lysates,

Lane 2: A549 whole cell lysates.

Use rabbit anti-ADAM10 1:1000, probed with a goat anti-rabbit IgG-HRP secondary antibody. The signal is developed using an Enhanced Chemiluminescent detection (ECL) kit (Catalog # EK1002). A specific band was detected for ADAM10 at approximately 84KD. The expected band size for ADAM10 is at 84KD.