

## Basic Information

<b>Product Name</b>	Anti-CD68 Antibody
<b>Gene Name</b>	CD68
<b>Source</b>	Rabbit
<b>Isotype</b>	IgG
<b>Species Reactivity</b>	human
<b>Tested Application</b>	IHC, ELISA
<b>Contents</b>	500 ug/ml antibody with PBS, 0.02% NaN <sub>3</sub> , 1 mg BSA and 50% glycerol.
<b>Immunogen</b>	E.coli-derived human CD68 recombinant protein (Position: K154-L354).
<b>concentration</b>	500 ug/ml
<b>Purification</b>	Immunogen affinity purified.
<b>Dilution Ratios</b>	Immunohistochemistry in paraffin section (IHC): 1:50-400 (ELISA): 1:100-1000 (Boiling the paraffin sections in 10mM citrate buffer, pH6.0, or PH8.0 EDTA repair liquid for 20 mins is required for the staining of formalin/paraffin sections.) Optimal working dilutions must be determined by end user.

## Storage

12 months from date of receipt, -20°C as supplied. 6 months 2 to 8°C after reconstitution. Avoid repeated freezing and thawing.

## Background Information

CD68, cluster of differentiation, is a 110-kD transmembrane glycoprotein that is highly expressed by human monocytes and tissue macrophages. CD68 is a member of a family of hematopoietic mucin-like molecules that includes leukosialin/CD43 and stem cell antigen CD34. The CD68 gene is mapped to 17p13.1. Immunohistochemistry can be used to identify the presence of CD68, which is found in the cytoplasmic granules of a range of different blood cells. It is particularly useful as a marker for the various cells of the macrophage lineage, including monocytes, histiocytes, giant cells, Kupffer cells, and osteoclasts. This allows it to be used to distinguish diseases of otherwise similar appearance, such as the monocyte/macrophage and lymphoid forms of leukaemia (the latter being CD68 negative). Its presence in macrophages also makes it useful in diagnosing conditions related to proliferation or abnormality of these cells, such as malignant histiocytosis, histiocytic lymphoma, and Gaucher's disease.

## Selected Validation Data

Product datasheet

## Anti-CD68 Antibody

Catalog Number: **A00602-1**

# BOSTER

antibody and ELISA experts

**BOSTER BIOLOGICAL TECHNOLOGY**

Special NO.1, International Enterprise Center,  
2nd Guanshan Road, Wuhan, China

**Web:** [www.boster.com.cn](http://www.boster.com.cn) **Phone:** +86 027-67845390 **Fax:** +86 027-67845390 **Email:** [boster@boster.com.cn](mailto:boster@boster.com.cn)

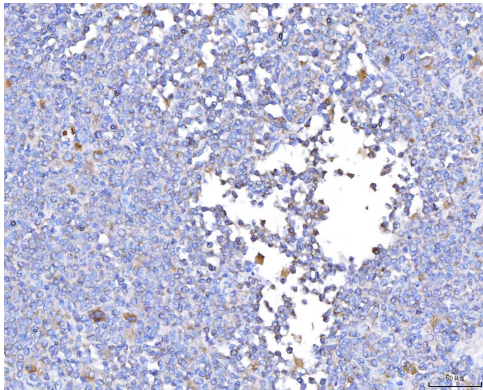


Figure 1. IHC analysis using anti-CD68 Antibody (A00602-1) detected in paraffin-embedded section of human lymph cancer tissue. Biotinylated goat anti-rabbit IgG was used as secondary antibody. The tissue section was developed using Streptavidin-Biotin-Complex (SABC) (Catalog # SA1022) with DAB as the chromogen.