

Basic Information

Product Name	Anti-CD163 Antibody	
Gene Name	CD163	
Source	Rabbit	
Isotype	IgG	
Species Reactivity	mouse, rat	
Tested Application	WB, IHC, ELISA	
Contents	500 ug/ml antibody with PBS , 0.02% NaN ₃ , 1 mg BSA and 50% glycerol.	
Immunogen	E.coli-derived mouse Cd163 recombinant protein (Position: N122-H1039).	
concentration	500 ug/ml	
Purification	Immunogen affinity purified.	
Observed MW	125-150KD	
Dilution Ratios	Western blot(WB): 1:500-2000 Immunohistochemistry in paraffin section (IHC): 1:50-400 ELISA: 1:100-1000 (Boiling the paraffin sections in 10mM citrate buffer,pH6.0,or PH8.0 EDTA repair liquid for 20 mins is required for the staining of formalin/paraffin sections.) Optimal working dilutions must be determined by end user.	

Storage

12 months from date of receipt, -20°C as supplied. 6 months 2 to 8°C after reconstitution. Avoid repeated freezing and thawing.

Background Information

CD163 (Cluster of Differentiation 163) is a protein that in humans is encoded by the CD163 gene. The protein encoded by this gene is a member of the scavenger receptor cysteine-rich (SRCR) superfamily, and is exclusively expressed in monocytes and macrophages. It functions as an acute phase-regulated receptor involved in the clearance and endocytosis of hemoglobin/haptoglobin complexes by macrophages, and may thereby protect tissues from free hemoglobin-mediated oxidative damage. This protein may also function as an innate immune sensor for bacteria and inducer of local inflammation. Alternatively spliced transcript variants encoding different isoforms have been described for this gene.

Reference

Anti-CD163 Antibody 被引用在1文献中。

Selected Validation Data

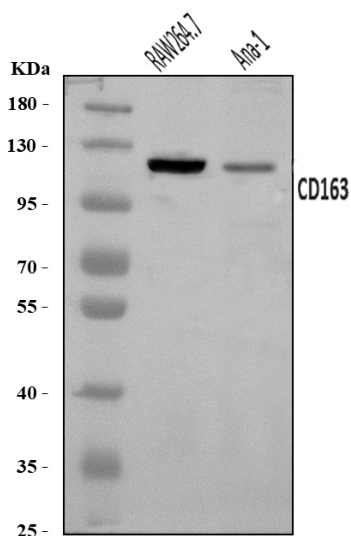


Figure 1. Western blot analysis of anti- Cd163 Antibody (A00812-2).

The sample well of each lane was loaded with 50ug of sample under reducing conditions.

Lane 1: RAW264.7 whole cell lysates,

Lane 2: Ana-1 whole cell lysates.

Use rabbit anti- Cd163 1:1000, probed with a goat anti-rabbit IgG-HRP secondary antibody. The signal is developed using an Enhanced Chemiluminescent detection (ECL) kit (Catalog # EK1002). A specific band was detected for Cd163 at approximately 125KD. The expected band size for Cd163 is at 121KD.