

Basic Information

Product Name	Anti-CD163 Antibody
Gene Name	CD163
Source	Rabbit
Isotype	IgG
Species Reactivity	human
Tested Application	WB, FCM
Contents	500 ug/ml antibody with PBS , 0.02% NaN ₃ , 1 mg BSA and 50% glycerol.
Immunogen	A synthetic peptide corresponding to a sequence of human CD163 (SWGTVCDSDWDLDDAQVVCQQL).
concentration	500 ug/ml
Purification	Immunogen affinity purified.
Observed MW	125-150KD
Dilution Ratios	Western blot(WB): 1:500-2000 Flow cytometry (FCM):1-3μg/1x10 ⁶ cells

Storage

12 months from date of receipt, -20°C as supplied. 6 months 2 to 8°C after reconstitution. Avoid repeated freezing and thawing.

Background Information

CD163 (Cluster of Differentiation 163) is a protein that in humans is encoded by the CD163 gene. The protein encoded by this gene is a member of the scavenger receptor cysteine-rich (SRCR) superfamily, and is exclusively expressed in monocytes and macrophages. It functions as an acute phase-regulated receptor involved in the clearance and endocytosis of hemoglobin/haptoglobin complexes by macrophages, and may thereby protect tissues from free hemoglobin-mediated oxidative damage. This protein may also function as an innate immune sensor for bacteria and inducer of local inflammation. Alternatively spliced transcript variants encoding different isoforms have been described for this gene.

Selected Validation Data

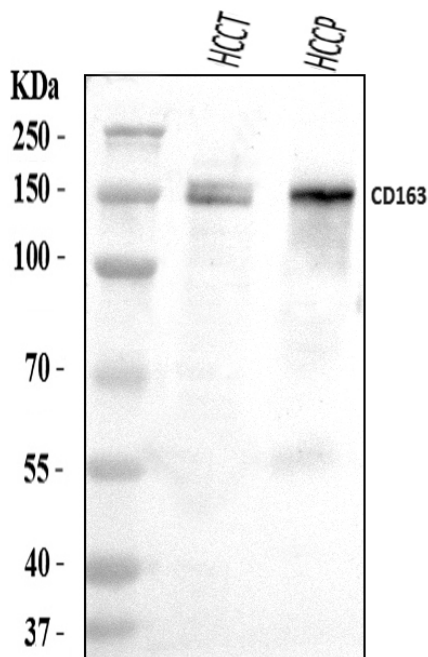


Figure 1. Western blot analysis of CD163 using anti-CD163 antibody (A00812-3). Lane 1: HCCT tissue lysates, Lane 2: HCCP tissue lysates. anti-CD163 antigen affinity purified polyclonal antibody (Catalog # A00812-3) probed with a goat anti-rabbit IgG-HRP secondary antibody. The signal is developed using an Enhanced Chemiluminescent detection (ECL) kit (Catalog # EK1002). A specific band was detected for CD163 at approximately 150 kDa. The expected band size for CD163 is at 125 kDa.