

Basic Information

Product Name	Anti-AQP1 Antibody
Gene Name	AQP1
Source	Rabbit
Isotype	IgG
Species Reactivity	mouse, rat
Tested Application	WB
Contents	500 ug/ml antibody with PBS , 0.02% Na ₂ S ₂ O ₃ , 1 mg BSA and 50% glycerol.
Immunogen	A synthetic peptide corresponding to a sequence of human AQP1 (QVEEYDLDDADDINSR).
concentration	500 ug/ml
Purification	Immunogen affinity purified.
Observed MW	28KD
Dilution Ratios	Western blot(WB):1:500-2000

Storage

12 months from date of receipt, -20°C as supplied. 6 months 2 to 8°C after reconstitution. Avoid repeated freezing and thawing.

Background Information

Aquaporin 1 is a 28-kD integral protein thought at first to be a breakdown product of the Rh polypeptide but was later shown to be a unique molecule that is abundant in erythrocytes and renal tubules. AQP1 is also expressed by the choroid plexus and various other tissues. It forms a water-specific channel that provides the plasma membranes of red cells and kidney proximal tubules with high permeability to water, thereby permitting water to move in the direction of an osmotic gradient.

Selected Validation Data

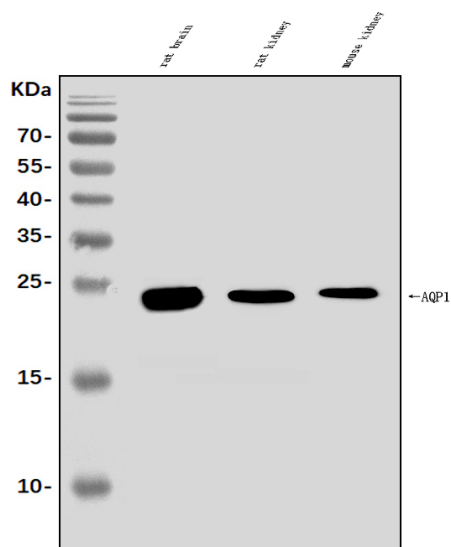


Figure 1. Western blot analysis of anti- AQP1 antibody (A00865).

The sample well of each lane was loaded with 50ug of sample under reducing conditions.

Lane 1: rat brain tissue lysates,

Lane 2: rat kidney tissue lysates,

Lane 3: mouse kidney tissue lysates.

Use rabbit anti- AQP1 1:1000, probed with a goat anti-rabbit IgG-

HRP secondary antibody. The signal is developed using an

Enhanced Chemiluminescent detection (ECL) kit (Catalog #

EK1002). A specific band was detected for AQP1 at approximately

28KD. The expected band size for AQP1 is at 28KD.