

Basic Information

Product Name	Anti-ABCC1 Antibody
Gene Name	ABCC1
Source	Rabbit
Isotype	IgG
Species Reactivity	human
Tested Application	WB, FCM, ELISA
Contents	500 ug/ml antibody with PBS , 0.02% NaN ₃ , 1 mg BSA and 50% glycerol.
Immunogen	E.coli-derived human MRP1/ABCC1 recombinant protein (Position: S239-K357).
concentration	500 ug/ml
Purification	Immunogen affinity purified.
Observed MW	220KD
Dilution Ratios	Western blot(WB): 1:500-2000 Flow cytometry (FCM):1-3μg/1x10 ⁶ cells ELISA: 1:100-1000

Storage

12 months from date of receipt, -20°C as supplied. 6 months 2 to 8°C after reconstitution. Avoid repeated freezing and thawing.

Background Information

Multidrug resistance-associated protein 1 (MRP1) is a protein that in humans is encoded by the ABCC1 gene. The protein encoded by this gene is a member of the superfamily of ATP-binding cassette (ABC) transporters. ABC proteins transport various molecules across extra-and intra-cellular membranes. ABC genes are divided into seven distinct subfamilies (ABC1, MDR/TAP, MRP, ALD, OABP, GCN20, White). This full transporter is a member of the MRP subfamily which is involved in multi-drug resistance. This protein functions as a multispecific organic anion transporter, with oxidized glutathione, cysteinyl leukotrienes, and activated aflatoxin B1 as substrates. This protein also transports glucuronides and sulfate conjugates of steroid hormones and bile salts. Alternatively spliced variants of this gene have been described but their full-length nature is unknown.

Selected Validation Data

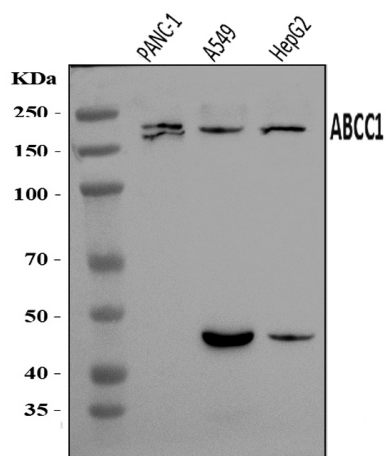


Figure 1. Western blot analysis of anti- ABCC1 Antibody (A00872-1).

The sample well of each lane was loaded with 50ug of sample under reducing conditions.

Lane 1: PANC-1 whole cell lysates,

Lane 2: A549 whole cell lysates,

Lane 3: HEPG2 whole cell lysates.

Use rabbit anti- ABCC1 1:1000, probed with a goat anti-rabbit IgG-

HRP secondary antibody. The signal is developed using an

Enhanced Chemiluminescent detection (ECL) kit (Catalog #

EK1002). A specific band was detected for ABCC1 at approximately

220KD. The expected band size for ABCC1 is at 172KD.