

Basic Information

Product Name	Anti-4EBP1/EIF4EBP1 Antibody	
Gene Name	EIF4EBP1	
Source	Rabbit	
Isotype	IgG	
Species Reactivity	human, mouse, rat	
Tested Application	WB, IHC, FCM	
Contents	500 ug/ml antibody with PBS , 0.02% NaN3 , 1 mg BSA and 50% glycerol.	
Immunogen	A synthetic peptide corresponding to a sequence of human EIF4EBP1 (PMEASQSHLRNSPEDK).	
concentration	500 ug/ml	
Purification	Immunogen affinity purified.	
Observed MW	17KD	
Dilution Ratios	Western blot(WB):	1:500-2000
	Immunohistochemistry in paraffin section (IHC):	1:50-400
	Flow cytometry (FCM):	1-3µg/1x10 ⁶ cells

Storage

12 months from date of receipt, -20°C as supplied. 6 months 2 to 8°C after reconstitution. Avoid repeated freezing and thawing.

Background Information

Eukaryotic translation initiation factor 4E-binding protein 1 (also known as 4E-BP1) is a protein that in humans is encoded by the EIF4EBP1 gene. This gene encodes one member of a family of translation repressor proteins. The protein directly interacts with eukaryotic translation initiation factor 4E (eIF4E), which is a limiting component of the multisubunit complex that recruits 40S ribosomal subunits to the 5' end of mRNAs. Interaction of this protein with eIF4E inhibits complex assembly and represses translation. This protein is phosphorylated in response to various signals including UV irradiation and insulin signaling, resulting in its dissociation from eIF4E and activation of mRNA translation.

Selected Validation Data

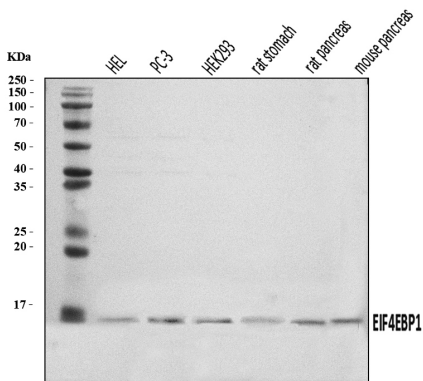


Figure 1. Western blot analysis of anti- EIF4EBP1 Antibody (A00968-1). The sample well of each lane was loaded with 50ug of sample under reducing conditions.

Lane 1: HEL whole cell lysates,

Lane 2: PC-3 whole cell lysates,

Lane 3: HEK293 whole cell lysates,

Lane 4: rat stomach tissue lysates,

Lane 5: rat pancreas tissue lysates,

Lane 6: mouse pancreas tissue lysates.

Use rabbit anti- EIF4EBP1 1:1000, probed with a goat anti-rabbit IgG-HRP secondary antibody. The signal is developed using an Enhanced Chemiluminescent detection (ECL) kit (Catalog # EK1002). A specific band was detected for EIF4EBP1 at approximately 17KD. The expected band size for EIF4EBP1 is at 13KD.