

Basic Information

Product Name	Anti-NRF1 Antibody	
Gene Name	NRF1	
Source	Rabbit	
Isotype	IgG	
Species Reactivity	human, mouse, rat	
Tested Application	WB, IHC, ICC/IF, ELISA	
Contents	500 ug/ml antibody with PBS , 0.02% NaN ₃ , 1 mg BSA and 50% glycerol.	
Immunogen	E. coli-derived human NRF1 recombinant protein (Position: D246-Q503).	
concentration	500 ug/ml	
Purification	Immunogen affinity purified.	
Observed MW	68KD	
Dilution Ratios	Western blot(WB): 1:500-2000 Immunohistochemistry in paraffin section (IHC): 1:50-400 Immunocytochemistry in fixed cells: 1:50-400 (ELISA): 1:100-1000 (Boiling the paraffin sections in 10mM citrate buffer,pH6.0,or PH8.0 EDTA repair liquid for 20 mins is required for the staining of formalin/paraffin sections.) Optimal working dilutions must be determined by end user.	

Storage

12 months from date of receipt, -20°C as supplied. 6 months 2 to 8°C after reconstitution. Avoid repeated freezing and thawing.

Background Information

Nuclear respiratory factor 1, is also known as NRF1. This gene encodes a protein that homodimerizes and functions as a transcription factor which activates the expression of some key metabolic genes regulating cellular growth and nuclear genes required for respiration, heme biosynthesis, and mitochondrial DNA transcription and replication. The protein has also been associated with the regulation of neurite outgrowth. Alternative splicing results in multiple transcript variants. Confusion has occurred in bibliographic databases due to the shared symbol of NRF1 for this gene and for "nuclear factor (erythroid-derived 2)-like 1" which has an official symbol of NFE2L1.

Selected Validation Data

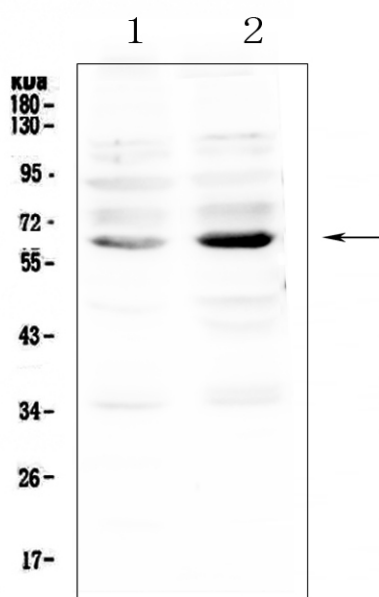


Figure 1. Western blot analysis of NRF1 using anti-NRF1 antibody (A01129-2). Lane 1: human K562 whole cell lysate, Lane 2: human MDA-MB-231 whole cell lysate. anti-NRF1 antigen affinity purified polyclonal antibody (Catalog # A01129-2) probed with a goat anti-rabbit IgG-HRP secondary antibody. The signal is developed using an Enhanced Chemiluminescent detection (ECL) kit (Catalog # EK1002). A specific band was detected for NRF1 at approximately 68KD. The expected band size for NRF1 is at 54KD.

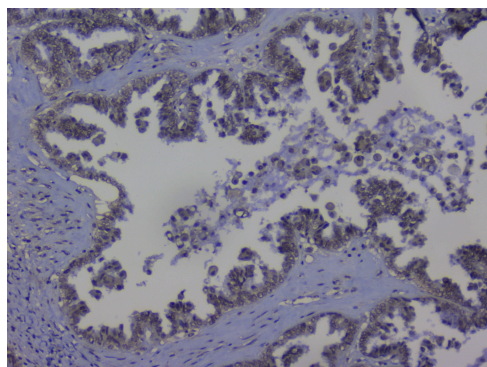


Figure 2. IHC analysis of NRF1 using anti-NRF1 antibody (A01129-2). NRF1 was detected in paraffin-embedded section of human ovary cancer tissue. anti-NRF1 Antibody (A01129-2). Biotinylated goat anti-rabbit IgG was used as secondary antibody. The tissue section was developed using Streptavidin-Biotin-Complex (SABC) (Catalog # SA1022) with DAB as the chromogen.

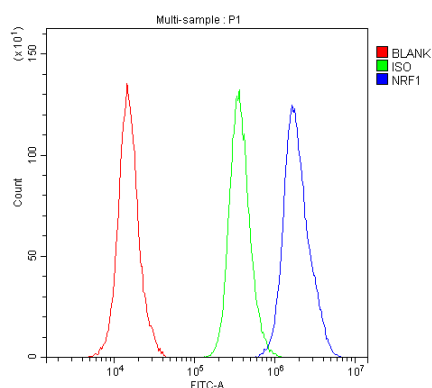


Figure 20. Flow Cytometry analysis of A431 cells using anti-NRF1 antibody (A01129-2). Overlay histogram showing A431 cells stained with A01129-2 (Blue line). anti-NRF1 Antibody (A01129-2, 1μg/1x10⁶ cells) for 30 min at 20°C. DyLight488 conjugated goat anti-rabbit IgG (BA1127, 5-10μg/1x10⁶ cells) was used as secondary antibody. Isotype control antibody (Green line) was rabbit IgG (1μg/1x10⁶) used under the same conditions. Unlabelled sample (Red line) was also used as a control.

Product datasheet

Anti-NRF1 Antibody

Catalog Number: **A01129-2**



antibody and ELISA experts

BOSTER BIOLOGICAL TECHNOLOGY

Special NO.1, International Enterprise Center,
2nd Guanshan Road, Wuhan, China

Web: www.boster.com.cn **Phone:** +86 027-67845390 **Fax:** +86 027-67845390 **Email:** boster@boster.com.cn