

Basic Information

| | | |
|--------------------|--|--|
| Product Name | Anti-HLA-DRA Antibody | |
| Gene Name | HLA-DRA | |
| Source | Rabbit | |
| Isotype | IgG | |
| Species Reactivity | human | |
| Tested Application | WB, IHC, FCM, ELISA | |
| Contents | 500 ug/ml antibody with PBS , 0.02% NaN3 , 1 mg BSA and 50% glycerol. | |
| Immunogen | E.coli-derived human HLA-DR/HLA-DRA recombinant protein (Position: I26-L254). | |
| concentration | 500 ug/ml | |
| Purification | Immunogen affinity purified. | |
| Observed MW | 37KD | |
| Dilution Ratios | Western blot(WB): 1:5000-20000 Immunohistochemistry in paraffin section (IHC): 1:50-400 Flow cytometry (FCM): 1-3 $\mu\text{g}/1 \times 10^6$ cells ELISA: 1:100-1000 (Boiling the paraffin sections in 10mM citrate buffer,pH6.0,or PH8.0 EDTA repair liquid for 20 mins is required for the staining of formalin/paraffin sections.) Optimal working dilutions must be determined by end user. | |

Storage

12 months from date of receipt, -20°C as supplied. 6 months 2 to 8°C after reconstitution. Avoid repeated freezing and thawing.

Background Information

HLA class II histocompatibility antigen, DR alpha chain is a protein that in humans is encoded by the HLA-DRA gene. It is mapped to 6p21.32. HLA-DRA is one of the HLA class II alpha chain paralogues. This class II molecule is a heterodimer consisting of an alpha and a beta chain, both anchored in the membrane. It plays a central role in the immune system by presenting peptides derived from extracellular proteins. Class II molecules are expressed in antigen presenting cells (APC: B lymphocytes, dendritic cells, macrophages). The alpha chain is approximately 33-35 kDa and its gene contains 5 exons. Exon 1 encodes the leader peptide, exons 2 and 3 encode the two extracellular domains, and exon 4 encodes the transmembrane domain and the cytoplasmic tail. DRA does not have polymorphisms in the peptide binding part and acts as the sole alpha chain for DRB1, DRB3, DRB4 and DRB5.

Reference

Anti-HLA-DRA Antibody被引用在1文献中。

Selected Validation Data

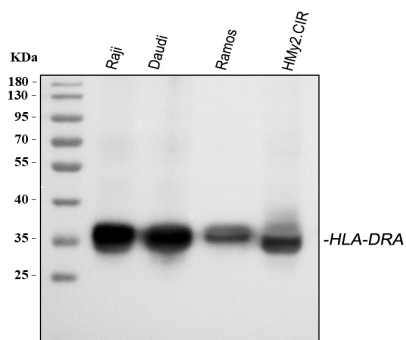


Figure 1. Western blot analysis of anti- HLA-DRA antibody (A01195). The sample well of each lane was loaded with 50ug of sample under reducing conditions.

Lane 1: human Raji whole cell lysates,

Lane 2: human Daudi whole cell lysates,

Lane 3: human Ramos whole cell lysates,

Lane 4: human HMy2.CIR whole cell lysates.

Use rabbit anti- HLA-DRA 1:5000, probed with a goat anti-rabbit IgG-HRP secondary antibody. The signal is developed using an Enhanced Chemiluminescent detection (ECL) kit (Catalog # EK1002). A specific band was detected for HLA-DRA at approximately 37KD. The expected band size for HLA-DRA is at 29KD.

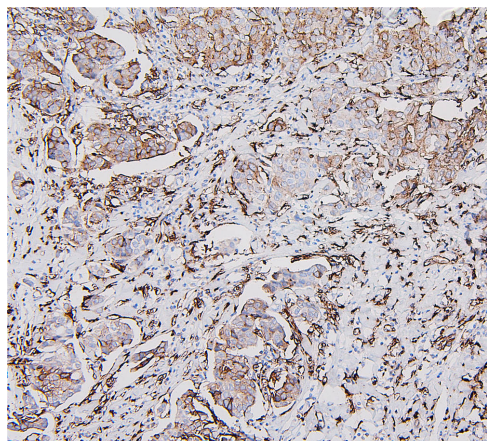


Figure 2. IHC analysis using anti- HLA-DRA antibody (A01195). detected in paraffin-embedded section of human mammary cancer tissue. Peroxidase Conjugated goat anti-rabbit IgG was used as secondary antibody. The tissue section was developed using HRP Conjugated Rabbit IgG Super Vision Assay Kit (Catalog # SV0002) with DAB as the chromogen.

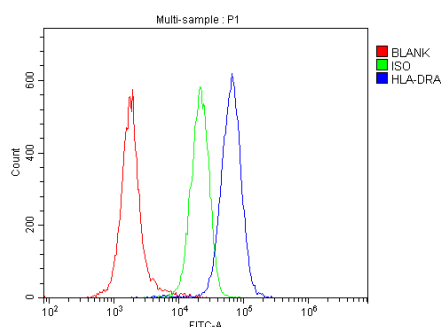


Figure 7. Flow cytometry analysis of h_PBMC cell (1×10^6) DyLight 488 conjugated goat anti- rabbit IgG(blue) was used as secondary antibody.Isotype control antibody (Green line) was rabbit IgG DyLight 488. Unlabelled sample (Red line).

Product datasheet

Anti-HLA-DRA Antibody

Catalog Number: **A01195**



antibody and ELISA experts

BOSTER BIOLOGICAL TECHNOLOGY

Special NO.1, International Enterprise Center,
2nd Guanshan Road, Wuhan, China

Web: www.boster.com.cn **Phone:** +86 027-67845390 **Fax:** +86 027-67845390 **Email:** boster@boster.com.cn