

Basic Information

| | | |
|--------------------|--|--|
| Product Name | Anti-IBA1/AIF1 Antibody | |
| Gene Name | AIF1 | |
| Source | Rabbit | |
| Isotype | IgG | |
| Species Reactivity | human | |
| Tested Application | WB, IHC | |
| Contents | 500 ug/ml antibody with PBS , 0.02% NaN3 , 1 mg BSA and 50% glycerol. | |
| Immunogen | A synthetic peptide corresponding to a sequence at the C-terminus of human Iba1 (99-133aa ETFSYPDFLRMMLGKRSAILKMILMYEEKAREKEK), different from the related mouse sequence by seven amino acids, and from the related rat sequence by six amino acids. | |
| concentration | 500 ug/ml | |
| Purification | Immunogen affinity purified. | |
| Observed MW | 17KD | |
| Dilution Ratios | Western blot(WB): 1:500-2000 Immunohistochemistry in paraffin section (IHC): 1:50-400 (Boiling the paraffin sections in 10mM citrate buffer,pH6.0,or PH8.0 EDTA repair liquid for 20 mins is required for the staining of formalin/paraffin sections.) Optimal working dilutions must be determined by end user. | |

Storage

12 months from date of receipt, -20°C as supplied. 6 months 2 to 8°C after reconstitution. Avoid repeated freezing and thawing.

Background Information

Allograft inflammatory factor 1 (AIF-1), also known as ionized calcium-binding adapter molecule 1 (IBA1), is a protein that in humans is encoded by the AIF1 gene. This gene encodes a protein that binds actin and calcium. And this gene is induced by cytokines and interferon and may promote macrophage activation and growth of vascular smooth muscle cells and T-lymphocytes. Polymorphisms in this gene may be associated with systemic sclerosis. Alternative splicing results in multiple transcript variants, but the full-length and coding nature of some of these variants is not certain.

Selected Validation Data



Figure 1. Western blot analysis of Iba1 using anti-Iba1 antibody (A01394). lane 1: human blood tissue lysates. probed with a goat anti-rabbit IgG-HRP secondary antibody. The signal is developed using an Enhanced Chemiluminescent detection (ECL) kit (Catalog # EK1002). A specific band was detected for Iba1 at approximately 17KD. The expected band size for Iba1 is at 17KD.

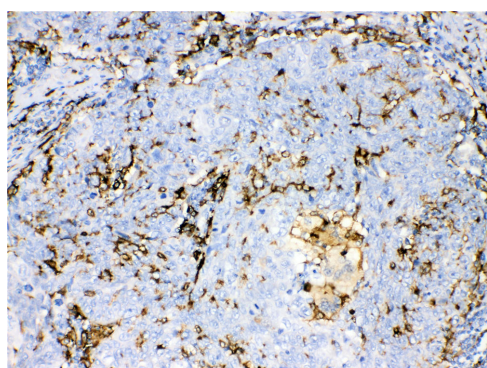


Figure 2. IHC analysis of Iba1 using anti-Iba1 antibody (A01394). Iba1 was detected in paraffin-embedded section of human lung cancer tissues. Biotinylated goat anti-rabbit IgG was used as secondary antibody. The tissue section was developed using Streptavidin-Biotin-Complex (SABC) (Catalog # SA1022) with DAB as the chromogen.