

Basic Information

| | |
|--------------------|--|
| Product Name | Anti-CD31/PECAM1 Antibody |
| Gene Name | Pecam1 |
| Source | Rabbit |
| Isotype | IgG |
| Species Reactivity | mouse, rat |
| Tested Application | WB, FCM, ELISA |
| Contents | 500 ug/ml antibody with PBS , 0.02% NaN ₃ , 1 mg BSA and 50% glycerol. |
| Immunogen | E.coli-derived mouse CD31/Pecam1 recombinant protein (Position: Q41-E258). |
| concentration | 500 ug/ml |
| Purification | Immunogen affinity purified. |
| Observed MW | 120-130KD |
| Dilution Ratios | Western blot(WB): 1:500-2000 Flow cytometry (FCM):1-3 µg/1x10 ⁶ cells (ELISA): 1:100-1000 |

Storage

12 months from date of receipt, -20°C as supplied. 6 months 2 to 8°C after reconstitution. Avoid repeated freezing and thawing.

Background Information

CD31 also known as Platelet endothelial cell adhesion molecule (PECAM-1), is a protein that in human is encoded by the PECAM1 gene. Encoded protein is a member of the immunoglobulin superfamily and this gene is mapped to 17q23.3. CD31 is found on the surface of platelets, monocytes, neutrophils, and some types of T-cells, and makes up a large portion of endothelial cell intercellular junctions. It is demonstrated that CD31 expression on human PBSCs may positively affect both neutrophil and platelet engraftment. Meanwhile, CD31 is involved in leukocyte migration and angiogenesis, which are key components of venous thrombus resolution.

Selected Validation Data

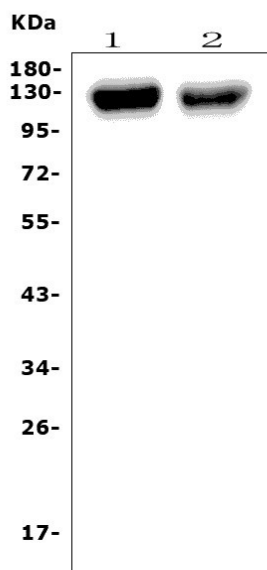


Figure 1. Western blot analysis of anti-Pecam1 antibody (A01513-2). The sample well of each lane was loaded with 50ug of sample under reducing conditions. Lane 1: rat lung tissue lysates, Lane 2: mouse lung tissue lysates. Use rabbit anti- Pecam1 1:1000, probed with a goat anti-rabbit IgG-HRP secondary antibody. The signal is developed using an Enhanced Chemiluminescent detection (ECL) kit (Catalog # EK1002). A specific band was detected for Pecam1 at approximately 120-130KD. The expected band size for Pecam1 is at 82KD.

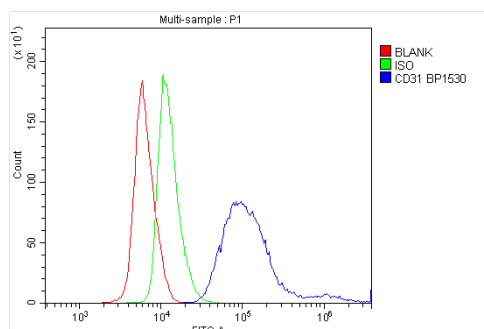


Figure 2. Flow cytometry analysis of mouse spleen cell (1x10⁶). DyLight488 conjugated goat anti-rabbit IgG (blue) was used as secondary antibody. Isotype control antibody (Green line) was rabbit IgG DyLight488. Unlabelled sample (Red line).