

Basic Information

Product Name	Anti-LC3A/MAP1LC3A Antibody
Gene Name	MAP1LC3A
Source	Rabbit
Isotype	IgG
Species Reactivity	mouse, rat
Tested Application	WB
Contents	500 ug/ml antibody with PBS, 0.02% NaN ₃ , 1 mg BSA and 50% glycerol.
Immunogen	A synthetic peptide corresponding to a sequence of human MAP1LC3A (RSFADRCKEVQQIRDQHPSK).
concentration	500 ug/ml
Purification	Immunogen affinity purified.
Observed MW	18KD
Dilution Ratios	Western blot(WB):1:500-2000

Storage

12 months from date of receipt, -20°C as supplied. 6 months 2 to 8°C after reconstitution. Avoid repeated freezing and thawing.

Background Information

Microtubule-associated proteins 1A/1B light chain 3A is a protein that in humans is encoded by the MAP1LC3A gene. MAP1A and MAP1B are microtubule-associated proteins which mediate the physical interactions between microtubules and components of the cytoskeleton. MAP1A and MAP1B each consist of a heavy chain subunit and multiple light chain subunits. The protein encoded by this gene is one of the light chain subunits and can associate with either MAP1A or MAP1B. Two transcript variants encoding different isoforms have been found for this gene. The expression of variant 1 is suppressed in many tumor cell lines, suggesting that may be involved in carcinogenesis.

Selected Validation Data

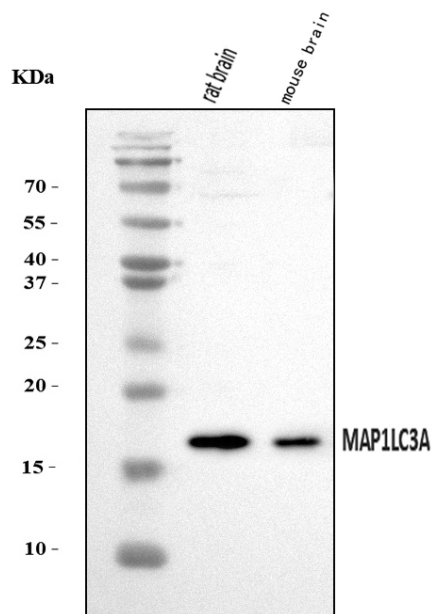


Figure 1. Western blot analysis of anti- MAP1LC3A Antibody (A01543-2). The sample well of each lane was loaded with 50ug of sample under reducing conditions.

Lane 1: rat brain tissue lysates,

Lane 2: mouse brain tissue lysates.

Use rabbit anti- MAP1LC3A 1:1000, probed with a goat anti-rabbit IgG-HRP secondary antibody. The signal is developed using an Enhanced Chemiluminescent detection (ECL) kit (Catalog # EK1002). A specific band was detected for MAP1LC3A at approximately 18KD. The expected band size for MAP1LC3A is at 14KD.