

Basic Information

Product Name	Anti-NPC2 Antibody	
Gene Name	NPC2	
Source	Rabbit	
Isotype	IgG	
Species Reactivity	human, mouse, rat	
Tested Application	WB, IHC, ICC/IF, FCM, ELISA	
Contents	500 ug/ml antibody with PBS , 0.02% NaN3 , 1 mg BSA and 50% glycerol.	
Immunogen	E.coli-derived human Niemann Pick C2/NPC2 recombinant protein (Position: E20-L151).	
concentration	500 ug/ml	
Purification	Immunogen affinity purified.	
Observed MW	19KD	
Dilution Ratios	Western blot(WB): Immunohistochemistry in paraffin section (IHC): Immunocytochemistry/Immunofluorescence (ICC/IF): Flow cytometry (FCM): (ELISA): (Boiling the paraffin sections in 10mM citrate buffer,pH6.0,or PH8.0 EDTA repair liquid for 20 mins is required for the staining of formalin/paraffin sections.) Optimal working dilutions must be determined by end user.	1:500-2000 1:50-400 1:50-400 1-3 µg/1x10 ⁶ cells 1:100-1000

Storage

12 months from date of receipt, -20°C as supplied. 6 months 2 to 8°C after reconstitution. Avoid repeated freezing and thawing.

Background Information

Epididymal secretory protein E1 (also called NPC intracellular cholesterol transporter 2, or NPC2) is a protein associated with Niemann-Pick disease, type C. It is mapped to 14q24.3. This gene encodes a protein containing a lipid recognition domain. The encoded protein may function in regulating the transport of cholesterol through the late endosomal/lysosomal system. Mutations in this gene have been associated with Niemann-Pick disease, type C2 and frontal lobe atrophy.

Reference

Anti-NPC2 Antibody被引用在1文献中。

Selected Validation Data

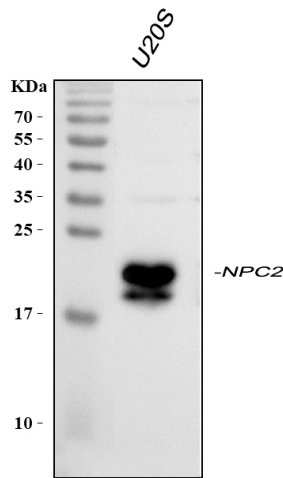


Figure 1. Western blot analysis of anti- NPC2 antibody (A01582-3). The sample well of each lane was loaded with 30ug of sample under reducing conditions.

Lane 1: human U2OS whole cell lysates.

Use rabbit anti- NPC2 1:1000, probed with a goat anti-rabbit IgG-HRP secondary antibody. The signal is developed using an Enhanced Chemiluminescent detection (ECL) kit (Catalog#EK1002). A specific band was detected for NPC2 at approximately 19KD. The expected band size for NPC2 is at 16KD.

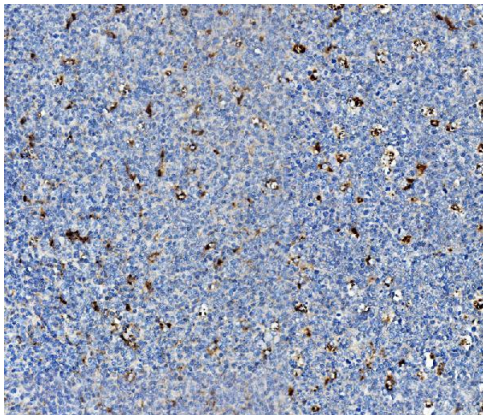


Figure 2. IHC analysis of anti-NPC2 antibody (A01582-3). detected in paraffin-embedded section of human tonsil tissue. Biotinylated goat anti-rabbit IgG was used as secondary antibody . The tissue section was developed using Streptavidin-Biotin-Complex (SABC) (Catalog # SA1022) with DAB as the chromogen.

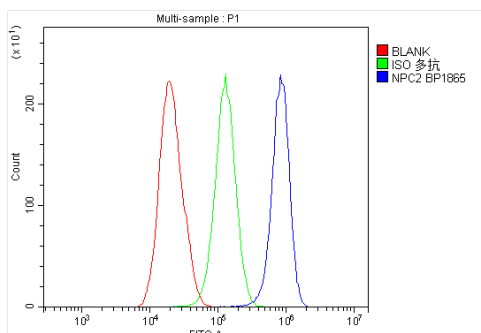


Figure 4. Flow cytometry analysis of HepG2 cell (1x10⁶) DyLight488 conjugated goat anti-rabbit IgG (blue) was used as secondary antibody. Isotype control antibody (Green line) was rabbit IgG DyLight488. Unlabelled sample (Red line).