

Basic Information

Product Name	Anti-Claudin 1/CLDN1 Antibody		
Gene Name	CLDN1		
Source	Rabbit		
Isotype	IgG		
Species Reactivity	human		
Tested Application	IHC, IF, ICC/IF		
Contents	500 ug/ml antibody with PBS , 0.02% NaN3 , 1 mg BSA and 50% glycerol.		
Immunogen	A synthetic peptide corresponding to a sequence of human Claudin 1/CLDN1 (ATAWYGNRIVQEFYD).		
concentration	500 ug/ml		
Purification	Immunogen affinity purified.		
Dilution Ratios	Immunohistochemistry in paraffin section (IHC): 1:50-400 Immunocytochemistry/Immunofluorescence (ICC/IF):1:50-400 Immunofluorescence (IF) : 1:50-400		

Storage

12 months from date of receipt, -20°C as supplied. 6 months 2 to 8°C after reconstitution. Avoid repeated freezing and thawing.

Background Information

Claudin-1 is a protein that in humans is encoded by the CLDN1 gene. Tight junctions represent one mode of cell-to-cell adhesion in epithelial or endothelial cell sheets, forming continuous seals around cells and serving as a physical barrier to prevent solutes and water from passing freely through the paracellular space. These junctions are comprised of sets of continuous networking strands in the outwardly facing cytoplasmic leaflet, with complementary grooves in the inwardly facing extracytoplasmic leaflet. The protein encoded by this gene, a member of the claudin family, is an integral membrane protein and a component of tight junction strands. Loss of function mutations result in neonatal ichthyosis-sclerosing cholangitis syndrome.

Selected Validation Data

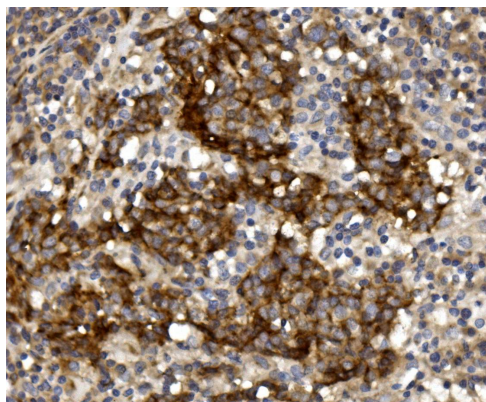


Figure 1. IHC analysis using anti- CLDN1 antibody (A01585-2). detected in paraffin-embedded section of human lung cancer tissue. Biotinylated goat anti-rabbit IgG was used as secondary antibody. The tissue section was developed using Streptavidin-Biotin-Complex (SABC) (Catalog # SA1022) with DAB as the chromogen.

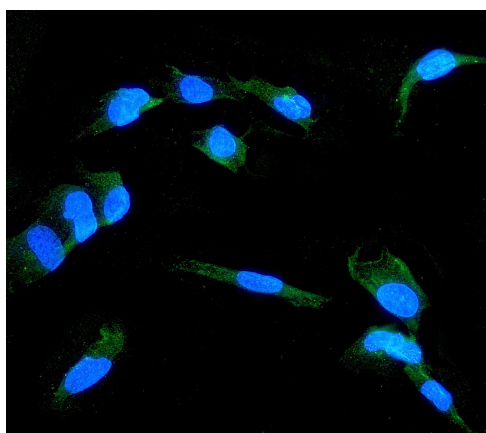


Figure 4. ICC analysis using anti- CLDN1 antibody (A01585-2) was detected in immersion fixed A549 cell line . Cells were stained using the Dylight488-conjugated Anti-rabbit IgG Secondary Antibody (green)(Catalog#BA1127) and counterstained with DAPI (blue).

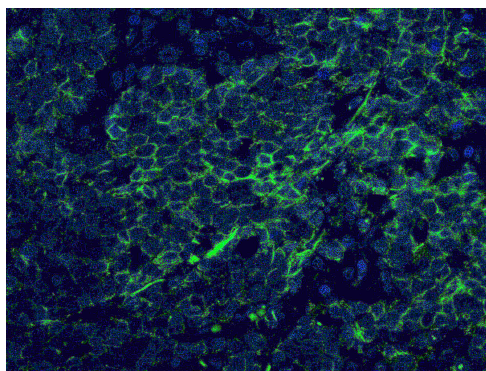


Figure 5. IF analysis using anti- CLDN1 antibody (A01585-2) . detected in paraffin-embedded section of human lung cancer tissue. The tissue section were stained using the Dylight488-conjugated Anti-rabbit IgG Secondary Antibody (green)(Catalog#BA1127) and counterstained with DAPI (blue).