

## Basic Information

<b>Product Name</b>	Human 14-3-3 Epsilon/YWHAE Recombinant Protein	
<b>Gene Name</b>	YWHAE	
<b>Source</b>	Rabbit	
<b>Isotype</b>	IgG	
<b>Species Reactivity</b>	human, mouse, rat	
<b>Tested Application</b>	WB, IHC, ELISA	
<b>Contents</b>	500 ug/ml antibody with PBS, 0.02% NaN <sub>3</sub> , 1 mg BSA and 50% glycerol.	
<b>Immunogen</b>	E.coli-derived human YWHAE recombinant protein (Position: Q16-L163).	
<b>concentration</b>	500 ug/ml	
<b>Purification</b>	Immunogen affinity purified.	
<b>Observed MW</b>	32KD	
<b>Dilution Ratios</b>	Western blot (WB):	1:500-2000
	ELISA:	1:100-1000
	Immunohistochemistry in paraffin section (IHC):	1:50-400
	(Boiling the paraffin sections in 10mM citrate buffer,pH6.0,or PH8.0 EDTA repair liquid for 20 mins is required for the staining of formalin/paraffin sections.) Optimal working dilutions must be determined by end user.	

## Storage

12 months from date of receipt, -20°C as supplied. 6 months 2 to 8°C after reconstitution. Avoid repeated freezing and thawing.

## Background Information

14-3-3 protein epsilon is a protein that in humans is encoded by the YWHAE gene. This gene product belongs to the 14-3-3 family of proteins which mediate signal transduction by binding to phosphoserine-containing proteins. This highly conserved protein family is found in both plants and mammals, and this protein is 100% identical to the mouse ortholog. It interacts with CDC25 phosphatases, RAF1 and IRS1 proteins, suggesting its role in diverse biochemical activities related to signal transduction, such as cell division and regulation of insulin sensitivity. It has also been implicated in the pathogenesis of small cell lung cancer. Two transcript variants, one protein-coding and the other non-protein-coding, have been found for this gene.

## Selected Validation Data

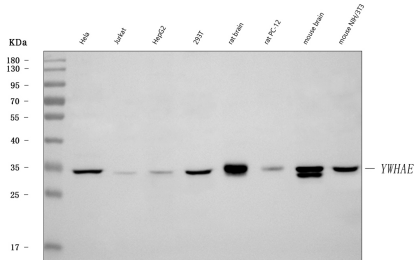


Figure 1. Western blot analysis of anti- YWHAE antibody (A01687-5). The sample well of each lane was loaded with 50ug of sample under reducing conditions.

Lane 1: HeLa whole cell lysates,

Lane 2: Jurkat whole cell lysates,

Lane 3: HepG2 whole cell lysates,

Lane 4: 293T whole cell lysates,

Lane 5: rat brain tissue lysates,

Lane 6: rat PC-12 whole cell lysates,

Lane 7: mouse brain tissue lysates,

Lane 8: mouse NIH/3T3 whole cell lysates.

Use rabbit anti- YWHAE 1:1000, probed with a goat anti-rabbit IgG- HRP secondary antibody. The signal is developed using an Enhanced Chemiluminescent detection (ECL) kit (Catalog # EK1002). A specific band was detected for YWHAE at approximately 32KD. The expected band size for YWHAE is at 29KD.