

Basic Information

Product Name	Anti-c-Rel/REL Antibody
Gene Name	REL
Source	Rabbit
Isotype	IgG
Species Reactivity	human
Tested Application	WB, FCM, ICC/IF, ELISA
Contents	500 ug/ml antibody with PBS, 0.02% NaN ₃ , 1 mg BSA and 50% glycerol.
Immunogen	E.coli-derived human c-Rel/REL recombinant protein (Position: K116-D610).
concentration	500 ug/ml
Purification	Immunogen affinity purified.
Dilution Ratios	

Storage

12 months from date of receipt, -20°C as supplied. 6 months 2 to 8°C after reconstitution. Avoid repeated freezing and thawing.

Background Information

The proto-oncogene c-Rel is a protein that in humans is encoded by the REL gene. This gene encodes a protein that belongs to the Rel homology domain/immunoglobulin-like fold, plexin, transcription factor (RHD/IPT) family. Members of this family regulate genes involved in apoptosis, inflammation, the immune response, and oncogenic processes. This proto-oncogene plays a role in the survival and proliferation of B lymphocytes. Mutation or amplification of this gene is associated with B-cell lymphomas, including Hodgkin's lymphoma. Single nucleotide polymorphisms in this gene are associated with susceptibility to ulcerative colitis and rheumatoid arthritis. Alternative splicing results in multiple transcript variants encoding different isoforms.

Selected Validation Data

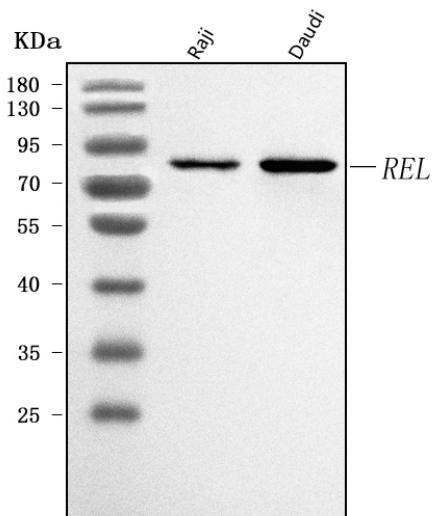


Figure 1. Western blot analysis of anti-c-Rel/REL antibody (A01880-1). The sample well of each lane was loaded with 30 ug of sample under reducing conditions.

Lane 1: human Raji whole cell lysates,

Lane 2: human Daudi whole cell lysates.

After electrophoresis, proteins were transferred to a membrane. Then the membrane was incubated with rabbit anti-c-Rel/REL antigen affinity purified polyclonal antibody (A01880-1) and probed with a goat anti-rabbit IgG-HRP secondary antibody (Catalog # BA1054). The signal is developed using ECL Plus Western Blotting Substrate (Catalog # AR1197). A specific band was detected for c-Rel/REL at approximately 78 kDa. The expected band size for c-Rel/REL is at 69 kDa.

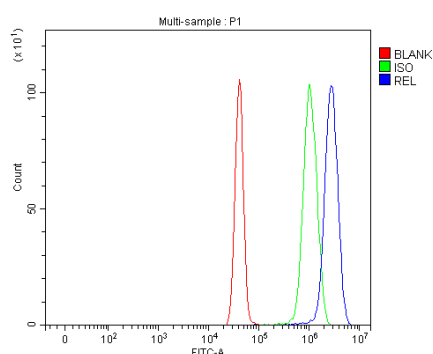


Figure 3. Flow Cytometry analysis of U251 cells using anti-c-Rel/REL antibody (A01880-1).

Overlay histogram showing U251 cells stained with A01880-1 (Blue line). The cells were blocked with 10% normal goat serum. And then incubated with rabbit anti-c-Rel/REL Antibody (A01880-1, 1 μ g/ 1×10^6 cells). DyLight®488 conjugated goat anti-rabbit IgG (BA1127, 5-10 μ g/ 1×10^6 cells) was used as secondary antibody. Isotype control antibody (Green line) was rabbit IgG (Catalog # BA1045) (1 μ g/ 1×10^6) used under the same conditions. Unlabelled sample (Red line) was also used as a control.

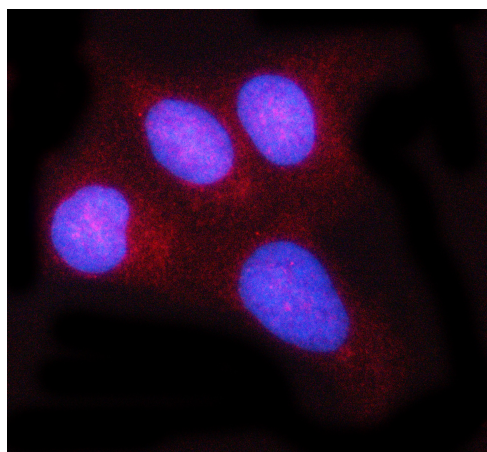


Figure 2. IF analysis of c-Rel/REL using anti-c-Rel/REL antibody (A01880-1).

c-Rel/REL was detected in an immunocytochemical section of U2OS cells. Cy3-conjugated Anti-rabbit IgG Secondary Antibody (red)(Catalog#BA1032) was used as secondary antibody. The section was counterstained with DAPI (Catalog # AR1176) (Blue).