

Basic Information

Product Name	Anti-FIS1 Antibody	
Gene Name	FIS1	
Source	Rabbit	
Isotype	IgG	
Species Reactivity	human, rat	
Tested Application	WB, IHC, ICC/IF, ELISA	
Contents	500 ug/ml antibody with PBS, 0.02% NaN ₃ , 1 mg BSA and 50% glycerol.	
Immunogen	E.coli-derived human TTC11/FIS1 recombinant protein (Position: E18-S152).	
concentration	500 ug/ml	
Purification	Immunogen affinity purified.	
Observed MW	17KD	
Dilution Ratios	Western blot(WB): 1:500-2000 Immunohistochemistry in paraffin section (IHC): 1:50-400 Immunocytochemistry/Immunofluorescence (ICC/IF): 1:50-400 (ELISA): 1:100-1000 (Boiling the paraffin sections in 10mM citrate buffer, pH6.0, or PH8.0 EDTA repair liquid for 20 mins is required for the staining of formalin/paraffin sections.) Optimal working dilutions must be determined by end user.	

Storage

12 months from date of receipt, -20°C as supplied. 6 months 2 to 8°C after reconstitution. Avoid repeated freezing and thawing.

Background Information

Mitochondrial fission 1 protein (FIS1) is a protein that in humans is encoded by the FIS1 gene on chromosome 7. It is mapped to 7q22.1. The balance between fission and fusion regulates the morphology of mitochondria. TTC11 is a component of a mitochondrial complex that promotes mitochondrial fission. Its role in mitochondrial fission thus implicates it in the regulation of mitochondrial morphology, the cell cycle, and apoptosis. By extension, the protein is involved in associated diseases, including neurodegenerative diseases and cancers.

Selected Validation Data

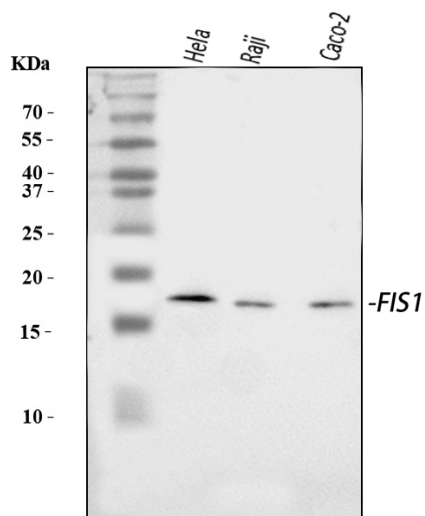


Figure 1. Western blot analysis of anti- FIS1 Antibody (A01932-3).

The sample well of each lane was loaded with 50ug of sample under reducing conditions.

Lane 1: HELA whole cell lysates,

Lane 2: Raji whole cell lysates,

Lane 3: CACO-2 whole cell lysates.

Use rabbit anti- FIS1 1:1000, probed with a goat anti-rabbit IgG-HRP secondary antibody. The signal is developed using an Enhanced Chemiluminescent detection (ECL) kit (Catalog # EK1002). A specific band was detected for FIS1 at approximately 17KD. The expected band size for FIS1 is at 17KD.