

Basic Information

Product Name	Anti-PLTP Antibody	
Gene Name	PLTP	
Source	Rabbit	
Isotype	IgG	
Species Reactivity	human	
Tested Application	WB, IHC, ICC/IF, FCM, ELISA	
Contents	500 ug/ml antibody with PBS , 0.02% NaN3 , 1 mg BSA and 50% glycerol.	
Immunogen	E.coli-derived human PLTP recombinant protein (Position: E18-E470).	
concentration	500 ug/ml	
Purification	Immunogen affinity purified.	
Observed MW	65KD	
Dilution Ratios	Western blot(WB): 1:500-2000 Immunohistochemistry in paraffin section (IHC): 1:50-400 Immunocytochemistry/Immunofluorescence (ICC/IF): 1:50-400 Flow cytometry (FCM): 1-3 μ g/1x10 ⁶ cells ELISA: 1:100-1000 (Boiling the paraffin sections in 10mM citrate buffer,pH6.0,or PH8.0 EDTA repair liquid for 20 mins is required for the staining of formalin/paraffin sections.) Optimal working dilutions must be determined by end user.	

Storage

12 months from date of receipt, -20°C as supplied. 6 months 2 to 8°C after reconstitution. Avoid repeated freezing and thawing.

Background Information

Phospholipid transfer protein(PLTP), also known as lipid transfer protein II is a protein that in humans is encoded by the PLTP gene. This gene is mapped to 20q13.12. The protein encoded by this gene is one of at least two lipid transfer proteins found in human plasma. The encoded protein transfers phospholipids from triglyceride-rich lipoproteins to high density lipoprotein(HDL). In addition to regulating the size of HDL particles, this protein may be involved in cholesterol metabolism. At least two transcript variants encoding different isoforms have been found for this gene.

Selected Validation Data

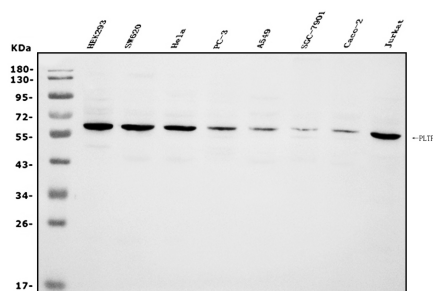


Figure 1. Western blot analysis of anti- PLTP antibody (A02209-1). The sample well of each lane was loaded with 50ug of sample under reducing conditions. Lane 1: human HEK293 whole cell lysates, Lane 2: human SW620 whole cell lysates, Lane 3: human HELA whole cell lysates, Lane 4: human PC-3 whole cell lysates, Lane 5: human A549 whole cell lysates, Lane 6: human SGC-7901 whole cell lysates, Lane 7: human CACO-2 whole cell lysates, Lane 8: human Jurkat whole cell lysates. Use rabbit anti- PLTP 1:1000, probed with a goat anti-rabbit IgG-HRP secondary antibody. The signal is developed using an Enhanced Chemiluminescent detection (ECL) kit (Catalog # EK1002). A specific band was detected for PLTP at approximately 65KD. The expected band size for PLTP at 54KD.