

## Basic Information

<b>Product Name</b>	Anti-MKP-1/2 (Phospho-S296/318) Antibody
<b>Gene Name</b>	DUSP1/DUSP4
<b>Source</b>	Rabbit
<b>Isotype</b>	IgG
<b>Species Reactivity</b>	human, mouse, rat
<b>Tested Application</b>	WB, IHC, ELISA
<b>Contents</b>	Liquid in PBS containing 50% glycerol, 0.5% BSA and 0.02% sodium azide.
<b>Immunogen</b>	Synthesized peptide derived from human MKP-1/2 around the phosphorylation site of S296/318.
<b>concentration</b>	1 mg/ml
<b>Purification</b>	The antibody was affinity-purified from rabbit antiserum by affinity-chromatography using epitope-specific immunogen.
<b>Dilution Ratios</b>	WB 1:500-1:2000 IHC 1:100-1:300 ELISA 1:5000

## Storage

Store at -20°C for one year. For short term storage and frequent use, store at 4°C for up to one month. Avoid repeated freeze-thaw cycles.

## Selected Validation Data

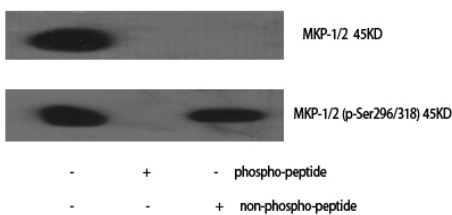


Figure 1. Western blotting validation for Anti-Phospho-MKP-1/2 (S296/318) DUSP1 Antibody A02276S296

Western Blot (WB) analysis of specific cells using Phospho-MKP-1/2 (S296/318) polyclonal antibody.

Electrophoresis was performed on a SDS-PAGE gel. To determine SDS-PAGE gel concentration

Product datasheet

**Anti-MKP-1/2 (Phospho-S296/318)**

**Antibody**

**Catalog Number: A02276S296**

**BOSTER**

antibody and ELISA experts

**BOSTER BIOLOGICAL TECHNOLOGY**

Special NO.1, International Enterprise Center,  
2nd Guanshan Road, Wuhan, China

**Web:** [www.boster.com.cn](http://www.boster.com.cn) **Phone:** +86 027-67845390 **Fax:** +86 027-67845390 **Email:** [boster@boster.com.cn](mailto:boster@boster.com.cn)