

## Basic Information

Product Name	Anti-Cytokeratin 7/KRT7 Antibody		
Gene Name	KRT7		
Source	Rabbit		
Isotype	IgG		
Species Reactivity	human		
Tested Application	WB, IHC		
Contents	500 ug/ml antibody with PBS, 0.02% NaN <sub>3</sub> , 1 mg BSA and 50% glycerol.		
Immunogen	A synthetic peptide corresponding to a sequence of human KRT7 (QEQSAKSSRLPDIFEAQIAGLR).		
concentration	500 ug/ml		
Purification	Immunogen affinity purified.		
Observed MW	51KD		
Dilution Ratios	Western blot(WB): 1:500-2000 Immunohistochemistry in paraffin section (IHC): 1:50-400 (Boiling the paraffin sections in 10mM citrate buffer,pH6.0,or PH8.0 EDTA repair liquid for 20 mins is required for the staining of formalin/paraffin sections.) Optimal working dilutions must be determined by end user.		

## Storage

12 months from date of receipt, -20°C as supplied. 6 months 2 to 8°C after reconstitution. Avoid repeated freezing and thawing.

## Background Information

Keratin, type II cytoskeletal 7 also known as cytokeratin-7 (CK-7) or keratin-7 (K7) or sarcolectin (SCL) is a protein that in humans is encoded by the KRT7 gene. The protein encoded by this gene is a member of the keratin gene family. The type II cytokeratins consist of basic or neutral proteins which are arranged in pairs of heterotypic keratin chains coexpressed during differentiation of simple and stratified epithelial tissues. This type II cytokeratin is specifically expressed in the simple epithelia lining the cavities of the internal organs and in the gland ducts and blood vessels. The genes encoding the type II cytokeratins are clustered in a region of chromosome 12q12-q13. Alternative splicing may result in several transcript variants; however, not all variants have been fully described.

## Reference

Anti-Cytokeratin 7/KRT7 Antibody被引用在1文献中。

## Selected Validation Data

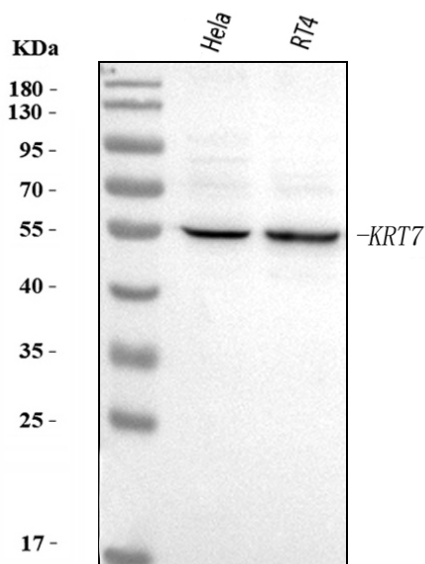


Figure 1. Western blot analysis of anti- KRT7 Antibody (A02416-2).

The sample well of each lane was loaded with 50ug of sample under reducing conditions.

Lane 1: HeLa whole cell lysates,

Lane 2: RT4 whole cell lysates.

Use rabbit anti- KRT7 1:1000, probed with a goat anti-rabbit IgG-

HRP secondary antibody. The signal is developed using an

Enhanced Chemiluminescent detection (ECL) kit (Catalog #

EK1002). A specific band was detected for KRT7 at approximately

51KD. The expected band size for KRT7 is at 51KD.