

Basic Information

Product Name	Anti-PDIA2 Antibody
Gene Name	PDIA2
Source	Rabbit
Isotype	IgG
Species Reactivity	human
Tested Application	WB, FCM, ELISA
Contents	500 ug/ml antibody with PBS, 0.02% NaN ₃ , 1 mg BSA and 50% glycerol.
Immunogen	E.coli-derived human PDIP/PDIA2 recombinant protein (Position: Y117-D492).
concentration	500 ug/ml
Purification	Immunogen affinity purified.
Observed MW	58KD
Dilution Ratios	Western blot(WB): 1:500-2000 Flow Cytometry (FCM): 1-3 µg/1x10 ⁶ cells ELISA: 1:100-1000

Storage

12 months from date of receipt, -20°C as supplied. 6 months 2 to 8°C after reconstitution. Avoid repeated freezing and thawing.

Background Information

Protein disulfide isomerase family A member 2 is a protein that in humans is encoded by the PDIA2 gene. This gene encodes a member of the disulfide isomerase (PDI) family of endoplasmic reticulum (ER) proteins that catalyze protein folding and thiol-disulfide interchange reactions. The encoded protein has an N-terminal ER-signal sequence, two catalytically active thioredoxin (TRX) domains, two TRX-like domains and a C-terminal ER-retention sequence. The protein plays a role in the folding of nascent proteins in the endoplasmic reticulum by forming disulfide bonds through its thiol isomerase, oxidase, and reductase activity. The encoded protein also possesses estradiol-binding activity and can modulate intracellular estradiol levels.

Selected Validation Data

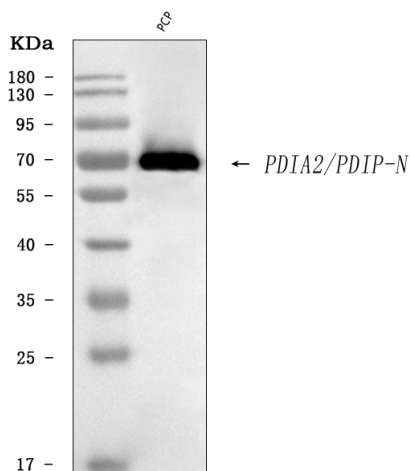


Figure 1. Western blot analysis of anti- PDIP/PDIA2 antibody (A03275-1). The sample well of each lane was loaded with 50ug of sample under reducing conditions.

Lane 1: PCP whole cell lysates.

Use rabbit anti- PDIP/PDIA2 1:1000, probed with a goat anti-rabbit IgG-HRP secondary antibody. The signal is developed using an Enhanced Chemiluminescent detection (ECL) kit (Catalog # EK1002). A specific band was detected for PDIP/PDIA2 at approximately 65KD. The expected band size for PDIP/PDIA2 is at 58KD.