

## Basic Information

<b>Product Name</b>	Anti-Phospho-APC1/ANAPC1 (S355) Antibody
<b>Gene Name</b>	ANAPC1
<b>Source</b>	Rabbit
<b>Isotype</b>	IgG
<b>Species Reactivity</b>	human, mouse
<b>Tested Application</b>	IHC, ELISA
<b>Contents</b>	Liquid in PBS containing 50% glycerol, 0.5% BSA and 0.02% sodium azide.
<b>Immunogen</b>	Synthesized peptide derived from human APC1 around the phosphorylation site of S355.
<b>concentration</b>	1 mg/ml
<b>Purification</b>	The antibody was affinity-purified from rabbit antiserum by affinity-chromatography using epitope-specific immunogen.
<b>Dilution Ratios</b>	IHC 1:100-1:300 ELISA 1:5000

## Storage

Store at -20°C for one year. For short term storage and frequent use, store at 4°C for up to one month. Avoid repeated freeze-thaw cycles.

## Background Information

APC1 (also known as Anaphase promoting complex subunit 1, Cyclosome subunit 1, Protein Tsg24, Mitotic checkpoint regulator and ANAPC1) is 1 of at least 11 subunits of the anaphase-promoting complex (APC), which functions at the metaphase-to-anaphase transition of the cell cycle and is regulated by spindle checkpoint proteins. The APC is an E3 ubiquitin ligase that targets cell cycle regulatory proteins for degradation by the proteasome, thereby allowing progression through the cell cycle.

## Selected Validation Data

Product datasheet

## Anti-Phospho-APC1/ANAPC1 (S355)

### Antibody

**Catalog Number: A03471S355**

# BOSTER

antibody and ELISA experts

**BOSTER BIOLOGICAL TECHNOLOGY**

Special NO.1, International Enterprise Center,  
2nd Guanshan Road, Wuhan, China

**Web:** [www.boster.com.cn](http://www.boster.com.cn) **Phone:** +86 027-67845390 **Fax:** +86 027-67845390 **Email:** [boster@boster.com.cn](mailto:boster@boster.com.cn)

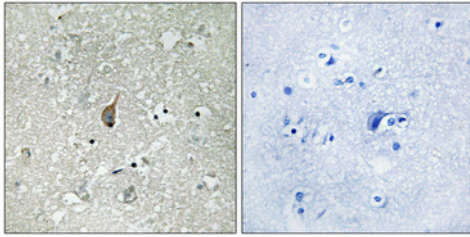


Figure 1. Immunohistochemistry validation of ANAPC1 using Anti-Phospho-APC1 (S355) ANAPC1 Antibody (A03471S355).

Immunohistochemical analysis of paraffin-embedded Human brain. Antibody was diluted at 1:100 (4°C)