

Basic Information

Product Name	Anti-Cytochrome c/CYCS Antibody	
Gene Name	CYCS	
Source	Rabbit	
Isotype	IgG	
Species Reactivity	human, mouse, rat	
Tested Application	WB, IHC	
Contents	500 ug/ml antibody with PBS , 0.02% NaN3 , 1 mg BSA and 50% glycerol.	
Immunogen	E. coli-derived mouse Cytochrome C recombinant protein (Position: G2-E105). Mouse Cytochrome C shares 91.3% and 100% amino acid (aa) sequence identity with human and rat Cytochrome C, respectively.	
concentration	500 ug/ml	
Purification	Immunogen affinity purified.	
Observed MW	14KD	
Dilution Ratios	Western blot(WB): 1:500-2000 Immunohistochemistry in paraffin section (IHC): 1:50-400 (Boiling the paraffin sections in 10mM citrate buffer,pH6.0,or PH8.0 EDTA repair liquid for 20 mins is required for the staining of formalin/paraffin sections.) Optimal working dilutions must be determined by end user.	

Storage

12 months from date of receipt, -20°C as supplied. 6 months 2 to 8°C after reconstitution. Avoid repeated freezing and thawing.

Background Information

CYCS is also known as CYC, HCS or THC4. This gene encodes a small heme protein that functions as a central component of the electron transport chain in mitochondria. The encoded protein associates with the inner membrane of the mitochondrion where it accepts electrons from cytochrome b and transfers them to the cytochrome oxidase complex. This protein is also involved in initiation of apoptosis. Mutations in this gene are associated with autosomal dominant nonsyndromic thrombocytopenia. Numerous processed pseudogenes of this gene are found throughout the human genome.

Reference

Anti-Cytochrome c/CYCS Antibody 被引用在4文献中。

Selected Validation Data

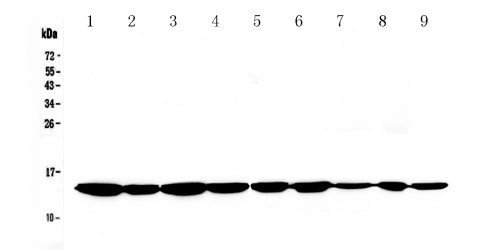


Figure 1. Western blot analysis of Cytochrome C using anti-Cytochrome C antibody (A03529). The sample well of each lane was loaded with 50ug of sample under reducing conditions. Lane 1: rat brain tissue lysate, Lane 2: rat heart tissue lysate, Lane 3: mouse brain tissue lysate, Lane 4: mouse heart tissue lysate, Lane 5: human Hela whole Cell lysate, Lane 6: human MCF-7 whole Cell lysate, Lane 7: human 293T whole Cell lysate, Lane 8: human HepG2 whole Cell lysate, Lane 9: human Jurkat whole Cell lysate. probed with a goat anti-rabbit IgG-HRP secondary antibody . The signal is developed using an Enhanced Chemiluminescent detection (ECL) kit (Catalog # EK1002) A specific band was detected for Cytochrome C at approximately 14KD. The expected band size for Cytochrome C is at 12KD.

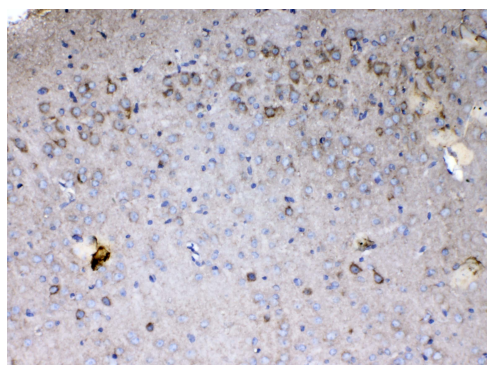


Figure 2. IHC analysis of Cytochrome C using anti-Cytochrome C antibody (A03529). Cytochrome C was detected in paraffin-embedded section of mouse brain tissue . . Biotinylated goat anti-rabbit IgG was used as secondary antibody The tissue section was developed using Streptavidin-Biotin-Complex (SABC)(Catalog # SA1022) with DAB as the chromogen.