

Basic Information

Product Name	Anti-Annexin A4/ANXA4 Antibody	
Gene Name	ANXA4	
Source	Rabbit	
Isotype	IgG	
Species Reactivity	human, mouse, rat	
Tested Application	WB, IHC, FCM	
Contents	500 ug/ml antibody with PBS , 0.02% NaN ₃ , 1 mg BSA and 50% glycerol.	
Immunogen	A synthetic peptide corresponding to a sequence in the middle region of human Annexin IV (119-152aa EEIRRISQTYQQYGRSLEDDIRSDTSFMFQRLV), different from the related mouse and rat sequences by three amino acids.	
concentration	500 ug/ml	
Purification	Immunogen affinity purified.	
Observed MW	36KD	
Dilution Ratios	Western blot(WB): 1:500-2000 Immunohistochemistry in paraffin section (IHC): 1:50-400 Flow cytometry (FCM): 1-3μg/1x10 ⁶ cells (Boiling the paraffin sections in 10mM citrate buffer,pH6.0,or PH8.0 EDTA repair liquid for 20 mins is required for the staining of formalin/paraffin sections.) Optimal working dilutions must be determined by end user.	

Storage

12 months from date of receipt, -20°C as supplied. 6 months 2 to 8°C after reconstitution. Avoid repeated freezing and thawing.

Background Information

ANXA4 (Annexin A4), also known as ANX4, is a protein that in humans is encoded by the ANXA4 gene. It belongs to the annexin family of calcium-dependent phospholipid binding proteins. By PCR analysis of somatic cell hybrids and in situ hybridization with a cDNA probe, the human ANXA4 gene is mapped to chromosome 2p13. Isolated from human placenta, ANXA4 encodes a protein that has possible interactions with ATP, and has in vitro anticoagulant activity and also inhibits phospholipase A2 activity. And ANXA4 is almost exclusively expressed in epithelial cells.

Selected Validation Data

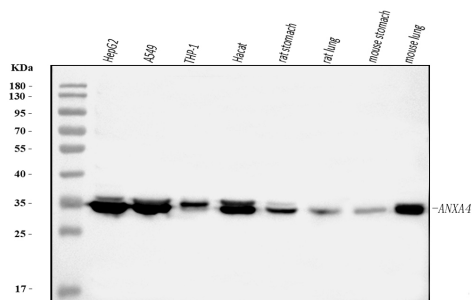


Figure 1. Western blot analysis of anti-ANXA4 Antibody (A04840).

The sample well of each lane was loaded with 50ug of sample under reducing conditions.

Lane 1: HEPG2 whole cell lysates,

Lane 2: A549 whole cell lysates,

Lane 3: THP-1 whole cell lysates,

Lane 4: Hacat whole cell lysates,

Lane 5: rat stomach tissue lysates,

Lane 6: rat lung tissue lysates,

Lane 7: mouse stomach tissue lysates,

Lane 8: mouse lung tissue lysates.

Use rabbit anti-ANXA4 1:1000, probed with a goat anti-rabbit IgG-HRP secondary antibody. The signal is developed using an Enhanced Chemiluminescent detection (ECL) kit (Catalog # EK1002). A specific band was detected for ANXA4 at approximately 36KD. The expected band size for ANXA4 is at 36KD.

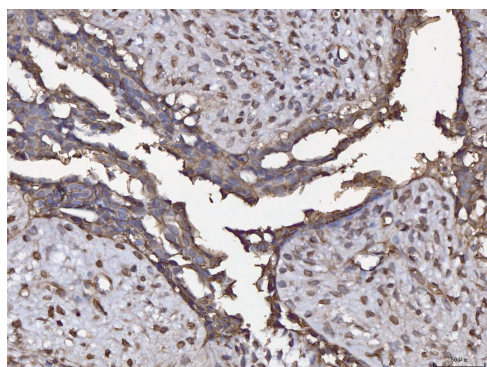
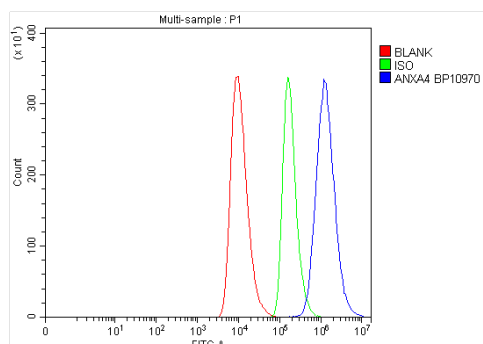


Figure 2. IHC analysis of ANXA4 Antibody (A04840). was detected in paraffin-embedded section of human breast cancer tissue.

Biotinylated goat anti-rabbit IgG was used as secondary antibody .

The tissue section was developed using Streptavidin-Biotin-Complex (SABC) (Catalog # SA1022) with DAB as the chromogen.

Figure 8. Flow cytometry analysis of HEL cell (1x10⁶) DyLight 488

conjugated goat anti- rabbit IgG(blue) was used as secondary antibody. Isotype control antibody (Green line) was rabbit IgG DyLight 488. Unlabelled sample (Red line).