

Basic Information

Product Name	Anti-GLS2 Antibody
Gene Name	GLS2
Source	Rabbit
Isotype	IgG
Species Reactivity	human
Tested Application	WB, FCM, ELISA
Contents	500 ug/ml antibody with PBS, 0.02% NaN ₃ , 1 mg BSA and 50% glycerol.
Immunogen	E.coli-derived human GLS2 recombinant protein (Position: M1-V602).
concentration	500 ug/ml
Purification	Immunogen affinity purified.
Observed MW	66KD
Dilution Ratios	Western blot(WB): 1:500-2000 Flow cytometry (FCM): 1-3µg/1x10 ⁶ cells (ELISA): 1:100-1000

Storage

12 months from date of receipt, -20°C as supplied. 6 months 2 to 8°C after reconstitution. Avoid repeated freezing and thawing.

Background Information

Glutaminase 2 (liver, mitochondrial) is a protein that in humans is encoded by the GLS2 gene. The protein encoded by this gene is a mitochondrial phosphate-activated glutaminase that catalyzes the hydrolysis of glutamine to stoichiometric amounts of glutamate and ammonia. Originally thought to be liver-specific, this protein has been found in other tissues as well. Alternative splicing results in multiple transcript variants that encode different isoforms.

Selected Validation Data

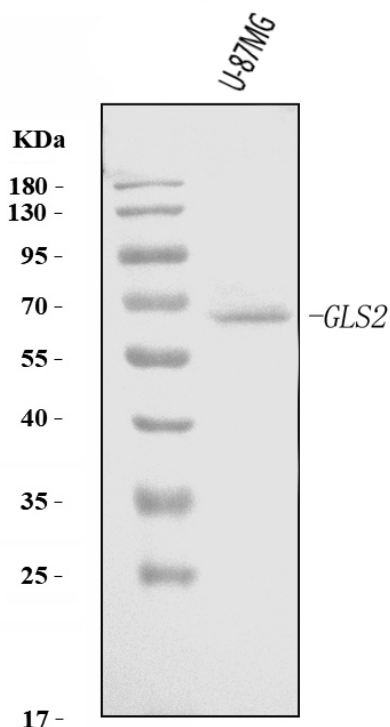


Figure 1. Western blot analysis of anti- GLS2 Antibody (A05334-1). The sample well of each lane was loaded with 50ug of sample under reducing conditions.
Lane 1: U-87MG whole cell lysates.
Use rabbit anti- GLS2 1:1000, probed with a goat anti-rabbit IgG- HRP secondary antibody. The signal is developed using an Enhanced Chemiluminescent detection (ECL) kit (Catalog # EK1002). A specific band was detected for GLS2 at approximately 66KD. The expected band size for GLS2 is at 66KD.