

## Basic Information

Product Name	Anti-MMP15 Antibody	
Gene Name	MMP15	
Source	Rabbit	
Isotype	IgG	
Species Reactivity	human, mouse, rat	
Tested Application	WB, ICC/IF, FCM, ELISA	
Contents	500 ug/ml antibody with PBS , 0.02% NaN3 , 1 mg BSA and 50% glycerol.	
Immunogen	E.coli-derived human MT2-MMP/MMP15 recombinant protein (Position: Y132-A202).	
concentration	500 ug/ml	
Purification	Immunogen affinity purified.	
Observed MW	76KDs	
Dilution Ratios	Western blot(WB): 1:500-2000 Immunocytochemistry/Immunofluorescence (ICC/IF):1:50-400 Flow cytometry (FCM): 1-3 µg/1x10 <sup>6</sup> cells ELISA: 1:100-1000	

## Storage

12 months from date of receipt, -20°C as supplied. 6 months 2 to 8°C after reconstitution. Avoid repeated freezing and thawing.

## Background Information

Matrix metalloproteinase 15 also known as MMP15 is an enzyme that in humans is encoded by the MMP15 gene. This gene encodes a member of the peptidase M10 family and membrane-type subfamily of matrix metalloproteinases (MMPs). Proteins in this family are involved in the breakdown of extracellular matrix in normal physiological processes, such as embryonic development, reproduction, and tissue remodeling, as well as in disease processes, such as arthritis and metastasis. Members of this subfamily contain a transmembrane domain suggesting that these proteins are expressed at the cell surface rather than secreted. The encoded preproprotein is proteolytically processed to generate the mature protease. This protein may play a role in cancer progression.

## Selected Validation Data

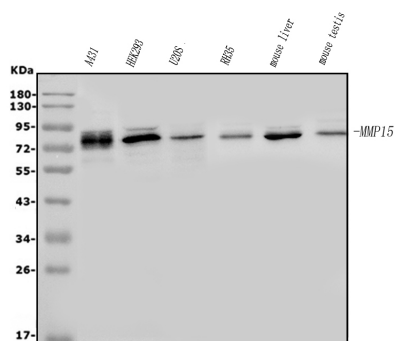


Figure 1. Western blot analysis of MT2-MMP/MMP15 using anti-MT2-MMP/MMP15 antibody (A06396-1). Electrophoresis was performed on a 5-20% SDS-PAGE gel at 70V (Stacking gel) / 90V (Resolving gel) for 2-3 hours. The sample well of each lane was loaded with 50ug of sample under reducing conditions. Lane 1: human A431 whole cell lysates, Lane 2: human HEK293 whole cell lysates, Lane 3: human U2OS whole cell lysates, Lane 4: rat RH35 whole cell lysates, Lane 5: mouse liver tissue lysates, Lane 6: mouse testis tissue lysates. After Electrophoresis, proteins were transferred to a Nitrocellulose membrane at 150mA for 50-90 minutes. Blocked the membrane with 5% Non-fat Milk/ TBS for 1.5 hour at RT. The membrane was incubated with rabbit anti-MT2-MMP/MMP15 antigen affinity purified polyclonal antibody (Catalog # A06396-1) at 0.5 µg/mL overnight at 4°C, then washed with TBS-0.1%Tween 3 times with 5 minutes each and probed with a goat anti-rabbit IgG-HRP secondary antibody at a dilution of 1:5000 for 1.5 hour at RT. The signal is developed using an Enhanced Chemiluminescent detection (ECL) kit (Catalog # EK1002) with Tanon 5200 system. A specific band was detected for MT2-MMP/MMP15 at approximately 74KD. The expected band size for MT2-MMP/MMP15 is at 74KD.

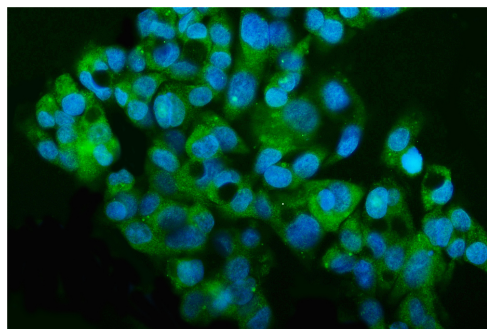


Figure 2. ICC analysis using anti-MMP15 antibody (A06396-1). was detected in immersion fixed HEPG2 cell line. Cells were stained using the DyLight488-conjugated Anti-rabbit IgG Secondary Antibody (green)(Catalog # BA1127) and counterstained with DAPI (blue).

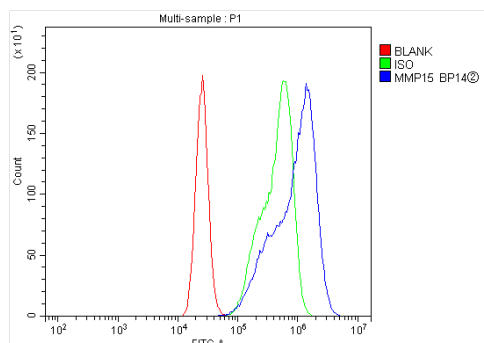


Figure 3. Flow cytometry analysis of CACO-2 cell (1x10<sup>6</sup>) DyLight 488 conjugated goat anti-rabbit IgG (blue) was used as secondary antibody. Isotype control antibody (Green line) was rabbit IgG DyLight 488. Unlabelled sample (Red line).

Product datasheet

## Anti-MMP15 Antibody

Catalog Number: **A06396-1**



antibody and ELISA experts

**BOSTER BIOLOGICAL TECHNOLOGY**

Special NO.1, International Enterprise Center,  
2nd Guanshan Road, Wuhan, China

---

**Web:** [www.boster.com.cn](http://www.boster.com.cn) **Phone:** +86 027-67845390 **Fax:** +86 027-67845390 **Email:** [boster@boster.com.cn](mailto:boster@boster.com.cn)