

Basic Information

Product Name	Anti-AQP11 Antibody
Gene Name	AQP11
Source	Rabbit
Isotype	IgG
Species Reactivity	human, mouse, rat
Tested Application	WB, FCM, ELISA
Contents	500 ug/ml antibody with PBS, 0.02% NaN ₃ , 1 mg BSA and 50% glycerol.
Immunogen	E.coli-derived human AQP11 recombinant protein (Position: L30-L57).
concentration	500 ug/ml
Purification	Immunogen affinity purified.
Observed MW	30KD/53KD
Dilution Ratios	Western blot(WB): 1:500-2000 Flow cytometry (FCM):1-3μg/1x10 ⁶ cells (ELISA): 1:100-1000

Storage

12 months from date of receipt, -20°C as supplied. 6 months 2 to 8°C after reconstitution. Avoid repeated freezing and thawing.

Background Information

AQP11 has a unique asparagine-proline-alanine (NPA) box distinct from those of other AQPs, suggesting a different pore structure and function. Using Northern blot analysis, they detected highest expression of mouse Aqp11 in testis, followed by liver and kidney. Expression was much weaker in heart, brain, and muscle. Western blot analysis of mouse kidney membrane fractions detected Aqp11 at an apparent molecular mass of 26 kD, lower than the calculated molecular mass of 30 kD. Immunohistochemical analysis localized Aqp11 to mouse renal proximal tubule cells, where it showed a perinuclear distribution. Fluorescence-tagged Aqp11 localized with an endoplasmic reticulum marker.

Selected Validation Data

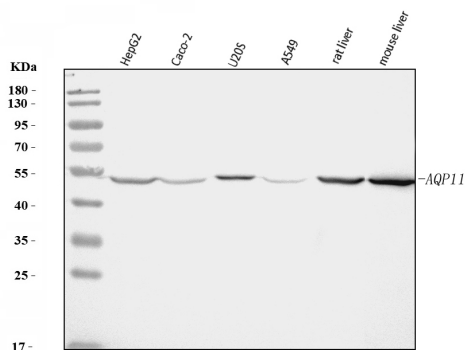


Figure 1. Western blot analysis of anti- AQP11 Antibody (A11399).

The sample well of each lane was loaded with 50ug of sample under reducing conditions.

Lane 1: HEPG2 whole cell lysates,

Lane 2: CACO-2 whole cell lysates,

Lane 3: U2OS whole cell lysates,

Lane 4: A549 whole cell lysates,

Lane 5: rat liver tissue lysates,

Lane 6: mouse liver tissue lysates.

Use rabbit anti-AQP11 1:1000, probed with a goat anti-rabbit IgG-HRP secondary antibody. The signal is developed using an Enhanced Chemiluminescent detection (ECL) kit (Catalog # EK1002). A specific band was detected for AQP11 at approximately 53KD. The expected band size for AQP11 is at 30KD.