

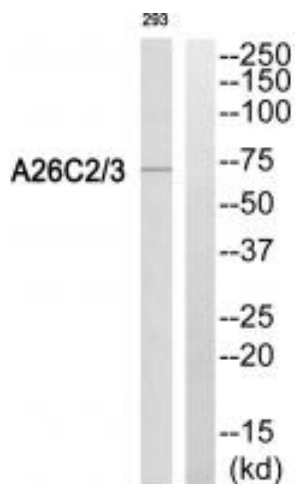
## Basic Information

<b>Product Name</b>	Anti-A26C2/3 Antibody
<b>Gene Name</b>	POTEG/POTEH
<b>Source</b>	Rabbit
<b>Isotype</b>	IgG
<b>Species Reactivity</b>	human
<b>Tested Application</b>	WB, IHC
<b>Contents</b>	Rabbit IgG in phosphate buffered saline (without Mg <sup>2+</sup> and Ca <sup>2+</sup> ), pH 7.4, 150mM NaCl, 0.02% sodium azide and 50% glycerol.
<b>Immunogen</b>	Synthesized peptide derived from internal of human A26C2/3.
<b>concentration</b>	0.5-1mg/ml, actual concentration vary by lot. Use suggested dilution ratio to decide dilution procedure.
<b>Purification</b>	Immunogen affinity purified
<b>Dilution Ratios</b>	WB, 1:500-1:3000 IHC, 1:50-1:100

## Storage

Store at -20°C for one year. For short term storage and frequent use, store at 4°C for up to one month. Avoid repeated freeze-thaw cycles.

## Selected Validation Data



Western blot analysis of extracts from 293 cells, using A26C2/3 antibody A18084.

Product datasheet  
**Anti-A26C2/3 Antibody**  
Catalog Number: **A18084**

**BOSTER**  
antibody and ELISA experts  
**BOSTER BIOLOGICAL TECHNOLOGY**  
Special NO.1, International Enterprise Center,  
2nd Guanshan Road, Wuhan, China

---

**Web:** [www.boster.com.cn](http://www.boster.com.cn) **Phone:** +86 027-67845390 **Fax:** +86 027-67845390 **Email:** [boster@boster.com.cn](mailto:boster@boster.com.cn)