

Basic Information

Product Name	Anti-CSGLCAT/CHPF2 Antibody
Gene Name	CHPF2
Source	Rabbit
Isotype	IgG
Species Reactivity	human
Tested Application	WB
Contents	Rabbit IgG in phosphate buffered saline (without Mg ²⁺ and Ca ²⁺), pH 7.4, 150mM NaCl, 0.02% sodium azide and 50% glycerol.
Immunogen	A peptide derived from human CSGLCAT. Immunogen sequence location: 31-80
concentration	0.5-1mg/ml, actual concentration vary by lot. Use suggested dilution ratio to decide dilution procedure.
Purification	The antibody was purified from rabbit antiserum by affinity-chromatography using immunogen.
Dilution Ratios	User need to optimize the dilution ratio for this antibody

Storage

Store at -20°C for one year. For short term storage and frequent use, store at 4°C for up to one month. Avoid repeated freeze-thaw cycles.

Selected Validation Data

Product datasheet

Anti-CSGLCAT/CHPF2 Antibody

Catalog Number: **A30609**

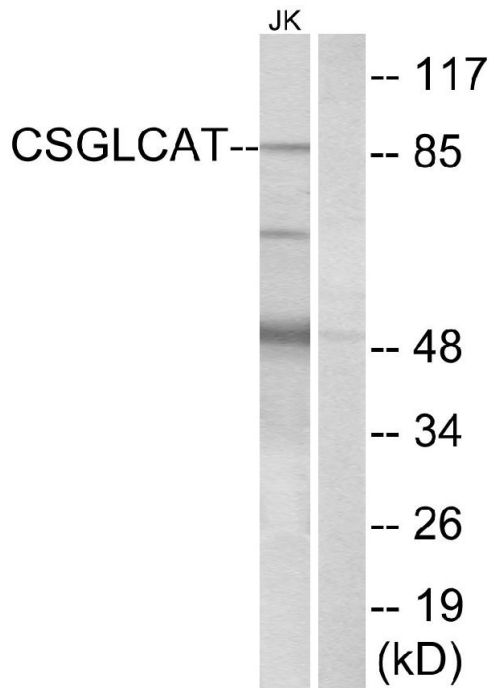
BOSTER

antibody and ELISA experts

BOSTER BIOLOGICAL TECHNOLOGY

Special NO.1, International Enterprise Center,
2nd Guanshan Road, Wuhan, China

Web: www.boster.com.cn Phone: +86 027-67845390 Fax: +86 027-67845390 Email: boster@boster.com.cn



Western blot analysis of lysates from Jurkat cells, using CSGLCAT Antibody. The lane on the right is blocked with the synthesized peptide.