

## Basic Information

<b>Product Name</b>	Anti-Collagen Type I/COL1A1 Antibody	
<b>Gene Name</b>	COL1A1	
<b>Source</b>	Rabbit	
<b>Isotype</b>	IgG	
<b>Species Reactivity</b>	human, mouse	
<b>Tested Application</b>	WB, IHC	
<b>Contents</b>	500 ug/ml antibody with PBS , 0.02% NaN3 , 1 mg BSA and 50% glycerol.	
<b>Immunogen</b>	A synthetic peptide corresponding to a sequence at the C-terminus of mouse Collagen I(1192-1207aa QPPQEKSDGGYYRA), identical to the related rat sequence, and different from the related human sequence by two amino acids.	
<b>concentration</b>	500 ug/ml	
<b>Purification</b>	Immunogen affinity purified.	
<b>Observed MW</b>	180-200KD	
<b>Dilution Ratios</b>	Western blot(WB): 1:500-2000 Immunohistochemistry in paraffin section (IHC): 1:50-400 (Boiling the paraffin sections in 10mM citrate buffer,pH6.0,or PH8.0 EDTA repair liquid for 20 mins is required for the staining of formalin/paraffin sections.) Optimal working dilutions must be determined by end user.	

## Storage

12 months from date of receipt, -20°C as supplied. 6 months 2 to 8°C after reconstitution. Avoid repeated freezing and thawing.

## Background Information

Collagen, type I, alpha 1, also known as COL1A1, is a human gene that encodes the major component of type I collagen, the fibrillar collagen found in most connective tissues, including cartilage. This gene is mapped to 17q21.33. This gene encodes the pro-alpha1 chains of type I collagen whose triple helix comprises two alpha1 chains and one alpha2 chain. Type I is a fibril-forming collagen found in most connective tissues and is abundant in bone, cornea, dermis and tendon. Mutations in this gene are associated with osteogenesis imperfecta types I-IV, Ehlers-Danlos syndrome type VIIA, Ehlers-Danlos syndrome Classical type, Caffey Disease and idiopathic osteoporosis.

## Reference

Anti-Collagen Type I/COL1A1 Antibody 被引用在67文献中。

## Selected Validation Data

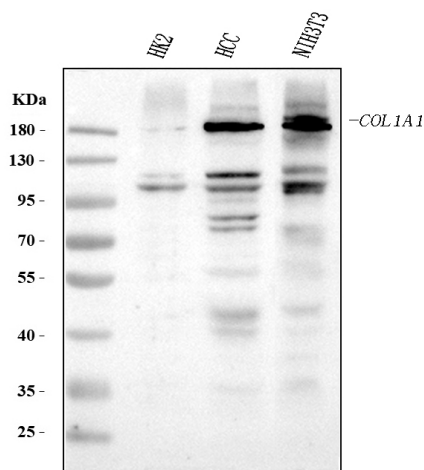


Figure 1. Western blot analysis using anti-COL1A1 antibody

(BA0325). The sample well of each lane was loaded with 50ug of sample under reducing conditions.

Lane 1: HK2 whole cell lysates,

Lane 2: HCC Tissue Lysates,

Lane 3: NIH3T3 whole cell lysates.

anti-COL1A1 antigen affinity purified polyclonal antibody (Catalog #

A02408) probed with a goat anti-rabbit IgG-HRP secondary antibody

The signal is developed using an Enhanced Chemiluminescent

detection (ECL) kit (Catalog # EK1002). A specific band was

detected for COL1A1 at approximately 180-200KD. The expected

band size for COL1A1 is at 138KD.

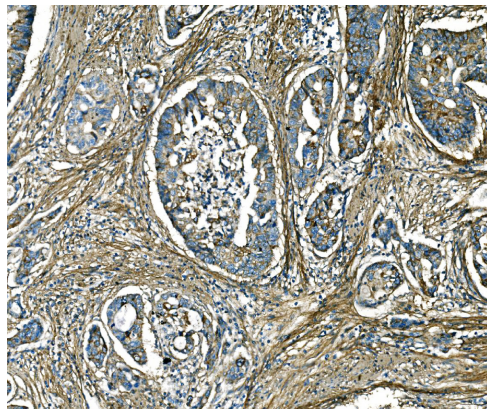


Figure 2. IHC analysis using anti- COL1A1 antibody (BA0325).

detected in paraffin-embedded section of human colon

adenocarcinoma tissue. Biotinylated goat anti-rabbit IgG was used

as secondary antibody. The tissue section was developed using

Streptavidin-Biotin-Complex (SABC) (Catalog # SA1022) with DAB as the chromogen.