

Basic Information

Product Name	Anti-iNOS/NOS2 Antibody		
Gene Name	NOS2		
Source	Rabbit		
Isotype	IgG		
Species Reactivity	human, mouse, rat		
Tested Application	WB, IHC		
Contents	500ug/ml antibody with PBS , 0.02% NaN ₃ , 1mg BSA		
Immunogen	A synthetic peptide corresponding to a sequence at the C-terminus of human iNOS(1110-1124aa VEDYFFQLKSQKRYH), identical to the related rat and mouse sequences.		
concentration	500 ug/ml		
Purification	Immunogen affinity purified.		
Observed MW	130KD		
Dilution Ratios	Western blot (WB): 1:500-2000 Immunohistochemistry in paraffin section (IHC): 1:50-400 (Boiling the paraffin sections in 10mM citrate buffer,pH6.0,or PH8.0 EDTA repair liquid for 20 mins is required for the staining of formalin/paraffin sections.) Optimal working dilutions must be determined by end user.		

Storage

12 months from date of receipt, -20°C as supplied. 6 months 2 to 8°C after reconstitution. Avoid repeated freezing and thawing.

Background Information

Nitric oxide synthase, inducible is an enzyme that in humans is encoded by the NOS2 gene. Nitric oxide (NO) is a messenger molecule with diverse functions throughout the body. In the brain and peripheral nervous system, NO displays many properties of a neurotransmitter; it is implicated in neurotoxicity associated with stroke and neurodegenerative diseases, neural regulation of smooth muscle, including peristalsis, and penile erection. Three different NOS isoforms have been identified which fall into two distinct types, constitutive and inducible. The inducible NOS (iNOS) isoform is expressed in a variety of cell types and tissues in response to inflammatory agents and cytokines. The human iNOS (NOS2) gene is approximately 37 kb in length and consists of 26 exons and 25 introns. NOS2-derived NO is a prerequisite for cytokine signaling and function in innate immunity.

Reference

Anti-iNOS/NOS2 Antibody被引用在31文献中。

Selected Validation Data

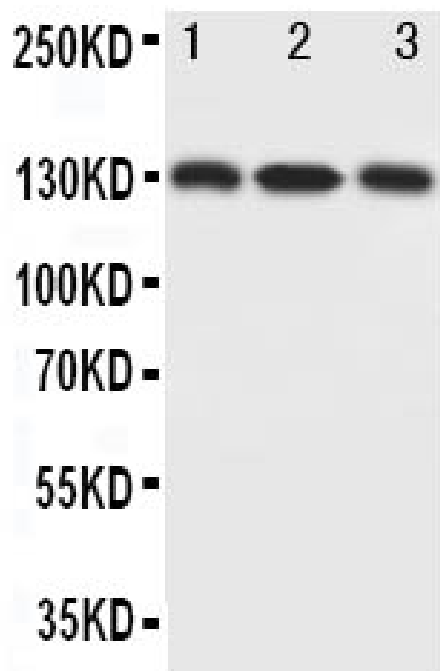


Figure 1. Western blot analysis of anti- NOS2/iNOS antibody (BA0362). The sample well of each lane was loaded with 50ug of sample under reducing conditions.

Lane 1: SCG whole cell lysates,

Lane 2: COLO 320 whole cell lysates,

Lane 3: MCF-7 whole cell lysates.

Use rabbit anti- NOS2/iNOS 1:1000, probed with a goat anti-rabbit IgG-HRP secondary antibody. The signal is developed using an Enhanced Chemiluminescent detection (ECL) kit (Catalog # EK1002). A specific band was detected for NOS2/iNOS at approximately 130KD. The expected band size for NOS2/iNOS is at 131KD.

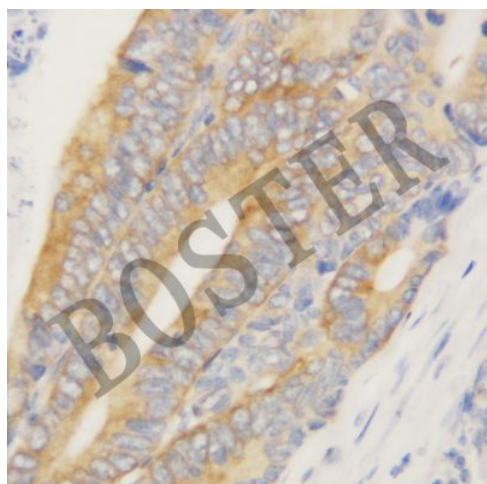


Figure 2. IHC analysis using anti- NOS2/iNOS antibody (BA0362). detected in paraffin-embedded section of human intestine tissue. Biotinylated goat anti-rabbit IgG was used as secondary antibody. The tissue section was developed using Streptavidin-Biotin-Complex (SABC) (Catalog # SA1022) with DAB as the chromogen.