

Basic Information

| | | |
|--------------------|--|--|
| Product Name | Anti-VEGF/VEGFA Antibody | |
| Gene Name | VEGFA | |
| Source | Rabbit | |
| Isotype | IgG | |
| Species Reactivity | human, mouse, rat | |
| Tested Application | WB, IHC, FCM | |
| Contents | 500 ug/ml antibody with PBS , 0.02% Na ₂ S ₂ O ₃ , 1 mg BSA and 50% glycerol. | |
| Immunogen | A synthetic peptide corresponding to a sequence at the N-terminus of human VEGF(33-48aa VDIFQEYPDEIEYIFK), identical to the related mouse and rat sequences. | |
| concentration | 500 ug/ml | |
| Purification | Immunogen affinity purified. | |
| Observed MW | 27KD | |
| Dilution Ratios | Western blot(WB): 1:500-2000 Immunohistochemistry in paraffin section (IHC): 1:50-400 Flow cytometry (FCM): 1-3 µg/1x10 ⁶ cells (Boiling the paraffin sections in 10mM citrate buffer,pH6.0,or PH8.0 EDTA repair liquid for 20 mins is required for the staining of formalin/paraffin sections.) Optimal working dilutions must be determined by end user. | |

Storage

12 months from date of receipt, -20°C as supplied. 6 months 2 to 8°C after reconstitution. Avoid repeated freezing and thawing.

Background Information

VEGF, a homodimeric glycoprotein of relative molecular mass 45,000, is the only mitogen that specifically acts on endothelial cells. It may be a major regulator of tumor angiogenesis in vivo. Vascular endothelial growth factor is a mitogen primarily for vascular endothelial cells. It is, however, structurally related to platelet-derived growth factor. VEGF shares homology with the PDGF A chain and B chain, including conservation of all 8 cysteines found in PDGFA and PDGFB. VEGF gene contains 8 exons. Vascular endothelial growth factor(VEGF) induces remodeling and enhances TH2-mediated sensitization and inflammation in the lung. VEGF regulates haematopoietic stem cell survival by an internal autocrine loop mechanism. Vascular endothelial growth factor(VEGF) stimulates neurogenesis in vitro and in vivo.

Reference

Anti-VEGF/VEGFA Antibody被引用在45文献中。

Selected Validation Data

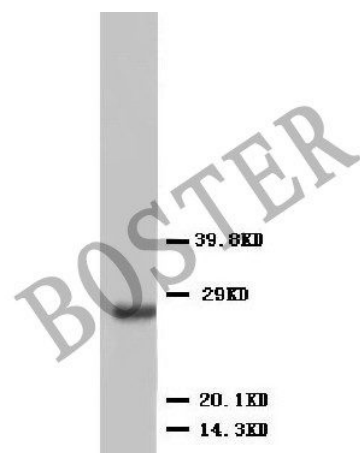


Figure 1. Western blot analysis of anti-VEGFA antibody (BA0407). The sample well of each lane was loaded with 50ug of sample under reducing conditions. Lane 1: Rat heart whole cell lysates. Use rabbit anti-VEGFA 1:1000, probed with a goat anti-rabbit IgG-HRP secondary antibody. The signal is developed using an Enhanced Chemiluminescent detection (ECL) kit (Catalog # EK1002). A specific band was detected for VEGFA at approximately 27KD. The expected band size for VEGFA is at 27KD.

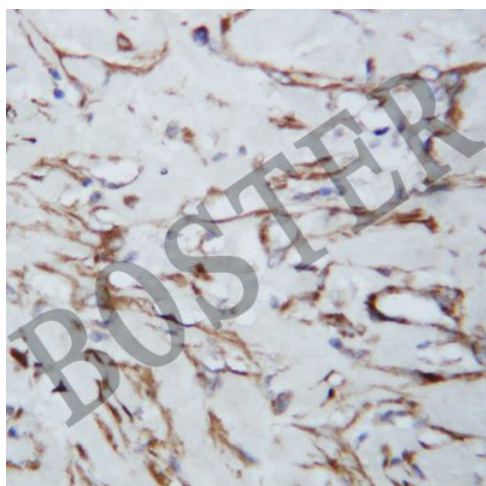


Figure 2. IHC analysis using anti- VEGFA antibody (BA0407). detected in paraffin-embedded section of human lung cancer tissue. Biotinylated goat anti-rabbit IgG was used as secondary antibody. The tissue section was developed using Streptavidin-Biotin-Complex (SABC) (Catalog # SA1022) with DAB as the chromogen.