

## Basic Information

Product Name	Anti-BCL2 Antibody	
Gene Name	BCL2	
Source	Rabbit	
Isotype	IgG	
Species Reactivity	human, mouse, rabbit, rat	
Tested Application	WB, IHC	
Contents	500ug/ml antibody with PBS , 0.02% NaN <sub>3</sub> , 1mg BSA	
Immunogen	A synthetic peptide corresponding to a sequence in the middle region of human Bcl-2 (102-140aa DDFSRRYRRDFAEMSSQLHLTPFTARGRFATVVEELFRD), identical to the related mouse and rat sequences.	
concentration	500 ug/ml	
Purification	Immunogen affinity purified.	
Observed MW	26KD	
Dilution Ratios	Western blot (WB): 1:500-2000 Immunohistochemistry in paraffin section (IHC): 1:50-400 (Boiling the paraffin sections in 10mM citrate buffer,pH6.0,or PH8.0 EDTA repair liquid for 20 mins is required for the staining of formalin/paraffin sections.) Optimal working dilutions must be determined by end user.	

## Storage

12 months from date of receipt, -20°C as supplied. 6 months 2 to 8°C after reconstitution. Avoid repeated freezing and thawing.

## Background Information

Immunoreactive BCL2 protein in the neoplastic cells of almost all follicular lymphomas whereas no BCL2 protein was detected in follicles affected by nonneoplastic processes or in normal lymphoid tissue. Every tumor with molecular-genetic evidence of t(14;18) translocation expressed detectable levels of BCL2 protein, regardless of whether the breakpoint was located in or at a distance from the BCL2 gene. Overexpression of BCL2 blocks the apoptotic death of a pro-B-lymphocyte cell line.

## Reference

Anti-BCL2 Antibody被引用在80文献中。

## Selected Validation Data

Product datasheet

## Anti-BCL2 Antibody

Catalog Number: **BA0412**

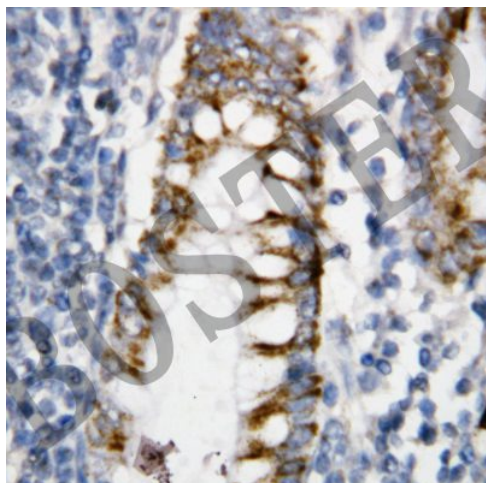
# BOSTER

antibody and ELISA experts

**BOSTER BIOLOGICAL TECHNOLOGY**

Special NO.1, International Enterprise Center,  
2nd Guanshan Road, Wuhan, China

**Web:** [www.boster.com.cn](http://www.boster.com.cn) **Phone:** +86 027-67845390 **Fax:** +86 027-67845390 **Email:** [boster@boster.com.cn](mailto:boster@boster.com.cn)



BCL-2(BA0412)直肠癌标本，石蜡切片，SABC法，DAB显色。