

## Basic Information

Product Name	Anti-CD34 Antibody	
Gene Name	CD34	
Source	Rabbit	
Isotype	IgG	
Species Reactivity	human,mouse,rat	
Tested Application	WB,IHC,IHC-F,FCM	
Contents	500ug/ml antibody with PBS , 0.02% NaN <sub>3</sub> , 1mg BSA	
Immunogen	A synthetic peptide corresponding to a sequence at the C-terminus of human CD34(366-382aa QATSRNGHSARQHVVAD), identical to the related mouse and rat sequences.	
concentration	500 ug/ml	
Purification	Immunogen affinity purified.	
Observed MW	105-120KD	
Dilution Ratios	Western blot (WB): 1:500-2000 Immunohistochemistry in paraffin section (IHC): 1:50-400 Immunohistochemistry in frozen section (IHC-F): 1:50-400 Flow cytometry (FCM): 1-3 µg/1×10 <sup>6</sup> cells (Boiling the paraffin sections in 10mM citrate buffer,pH6.0,or PH8.0 EDTA repair liquid for 20 mins is required for the staining of formalin/paraffin sections.) Optimal working dilutions must be determined by end user.	

## Storage

12 months from date of receipt, -20°C as supplied. 6 months 2 to 8°C after reconstitution. Avoid repeated freezing and thawing.

## Background Information

CD34 is a monomeric cell surface antigen with a molecular mass of approximately 110 KD. CD34 is expressed in humans in hematopoietic stem cells, vascular endothelium, and blasts from 30% of patients with acute myeloid and lymphocytic leukemia. The human CD34 gene spans 26 kb and has 8 exons, a structure quite similar to that of the murine gene. By Southern blot analysis of DNA from a panel of human x mouse somatic cell hybrids using a CD34 cDNA probe demonstrate that the gene for CD34 is located on human chromosome 1 in the 1q12----qter region. CD34 plays an important role in the formation of progenitor cells during both embryonic and adult hematopoiesis.

## Reference

Anti-CD34 Antibody被引用在27文献中。

## Selected Validation Data

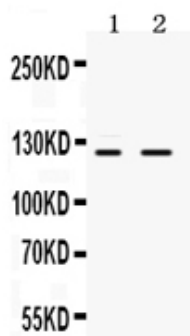


Figure 1. Western blot analysis of anti- CD34 antibody (BA0532).

The sample well of each lane was loaded with 50ug of sample under reducing conditions.

Lane 1: rat brain tissue lysates,

Lane 2: human Hela whole cell lysates.

Use rabbit anti- CD34 1:1000, probed with a goat anti-rabbit IgG-HRP secondary antibody. The signal is developed using an Enhanced Chemiluminescent detection (ECL) kit (Catalog # EK1002). A specific band was detected for CD34 at approximately 105-120KD. The expected band size for CD34 is at 41KD.

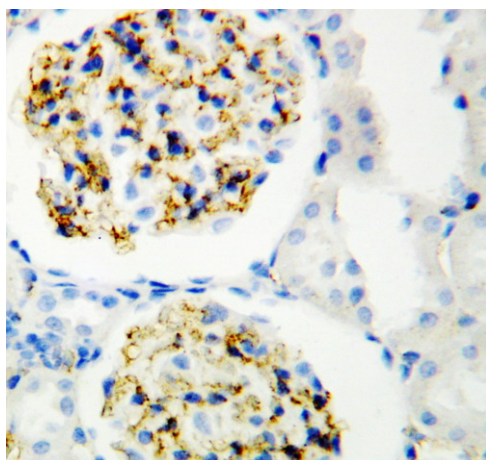


Figure 2. IHC analysis of CD34 using anti-CD34 antibody (BA0532).

CD34 was detected in a paraffin-embedded section of rat kidney tissue. The tissue section was developed using HRP Conjugated Rabbit IgG Super Vision Assay Kit (Catalog # SV0002) with DAB (Catalog # AR1022) as the chromogen.

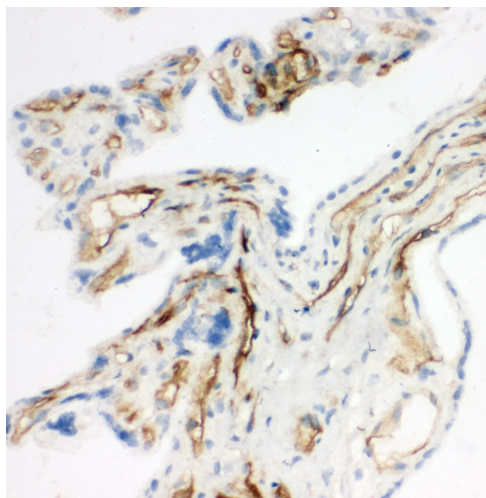


Figure 8. IHC analysis of CD34 using anti-CD34 antibody (BA0532). CD34 was detected in frozen section of rat placenta tissue. The tissue section was developed using HRP Conjugated Rabbit IgG Super Vision Assay Kit (Catalog # SV0002) with DAB (Catalog # AR1022) as the chromogen.

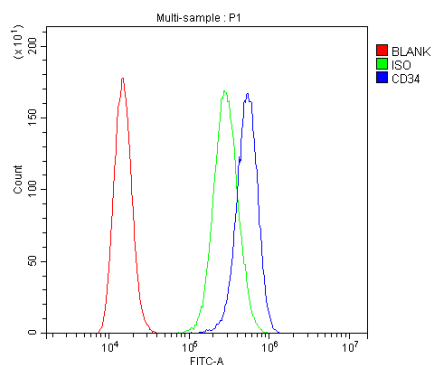


Figure 10. Flow cytometry analysis of A431 cell ( $1 \times 10^6$ ) DyLight 488 conjugated goat anti- rabbit IgG(blue) was used as secondary antibody. Isotype control antibody (Green line) was rabbit IgG DyLight 488. Unlabelled sample (Red line).