

## Basic Information

Product Name	Anti-IL6 Antibody
Gene Name	IL6
Source	Rabbit
Isotype	IgG
Species Reactivity	human
Tested Application	WB
Contents	500 ug/ml antibody with PBS , 0.02% NaN <sub>3</sub> , 1 mg BSA and 50% glycerol.
Immunogen	A synthetic peptide corresponding to a sequence at the C-terminus of human IL-6(195-212aa LRSFKEFLQSSLRALRQM).
concentration	500 ug/ml
Purification	Immunogen affinity purified.
Observed MW	24KD
Dilution Ratios	Western blot(WB):1:500-2000

## Storage

12 months from date of receipt, -20°C as supplied. 6 months 2 to 8°C after reconstitution. Avoid repeated freezing and thawing.

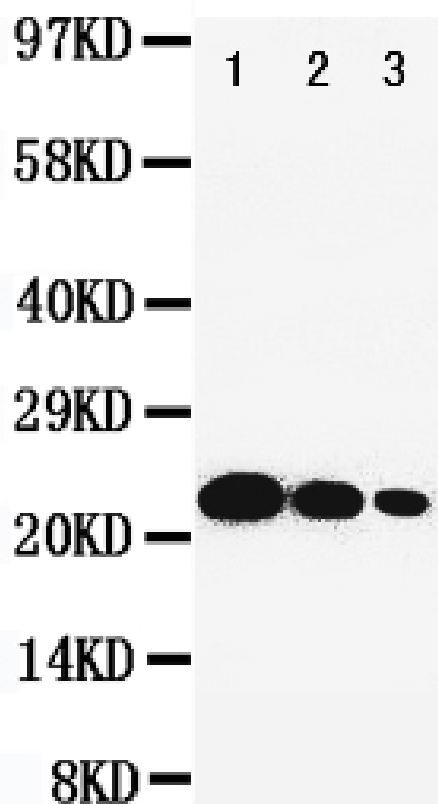
## Background Information

Interleukin-6(IL-6) is a protein that in humans is encoded by the IL6 gene. IL-6 is an interleukin that acts as both a pro-inflammatory and anti-inflammatory cytokine. It is secreted by T cells and macrophages to stimulate immune response to trauma, especially burns or other tissue damage leading to inflammation. IL-6 is one of the most important mediators of fever and of the acute phase response. IL-6 is also essential for hybridoma growth and is found in many supplemental cloning media such as briclone. Bowcock et al.(1988) assigned the IL6 gene to chromosome 7p21. By in situ hybridization and Southern blot analysis of mouse-human hybrid cell lines, Sutherland et al.(1988) mapped the IL6 gene to chromosome 7p15.

## Reference

Anti-IL6 Antibody被引用在1文献中。

## Selected Validation Data



Lane 1: Recombinant Human IL-6 Protein 10ng Lane 2:  
Recombinant Human IL-6 Protein 5ng Lane 3: Recombinant Human  
IL-6 Protein 2.5ng